

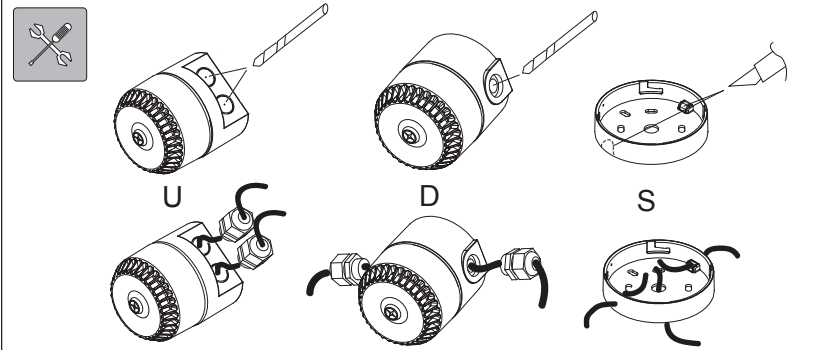
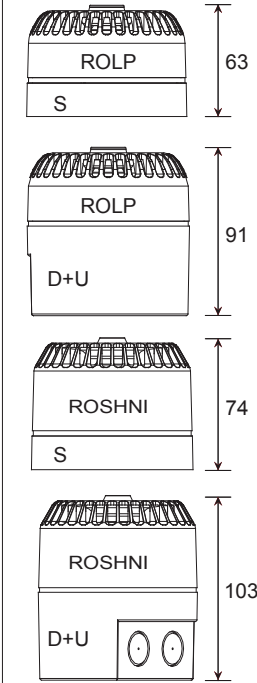
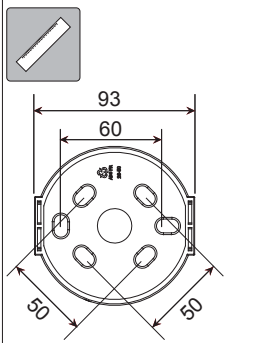
# ROSHNI (RO) & ROSHNI LP (ROLP)



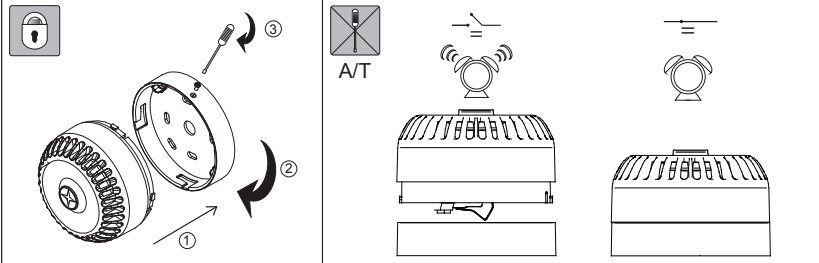
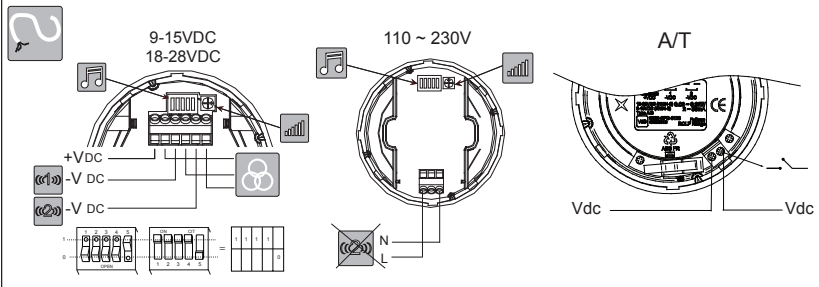
Roshni (RO) : 0832-CPD-0131 (18-28V)  
 Roshni LP (ROLP) : 0832-CPD-0128 (9-15V & 18-28V)  
 EN54-3 Fire Alarm Device - Sounder  
 Dispositif d'alarme incendie EN54-3 – Avertisseur d'incendie  
 EN54-3 Feueralarmgerät – Töner  
 Dispositivo de alarma anticendio a norma EN54-3 - Sirena  
 EN54-3 Brandalarm – sounder  
 Dispositivo de alarma de incendios EN54-3 – Timbre de alarma  
 EN54-3 Brandvarnare – Signalgivare  
 EN54-3 Urządzenie systemów SAP - Sygnalizator

	EN54-3		
	ROLP/Roshni		Roshni
V	9 ~ 15Vdc	18 ~ 28VDC	110 ~ 230VAC
I	32mA max		35mA
W	0.28mm <sup>2</sup> ~ 2.5mm <sup>2</sup>		0.75mm <sup>2</sup> ~ 2.5mm <sup>2</sup> 6A Rating
T	-25 °C ~ +70 °C		-10 °C ~ +55 °C
A	ABS V0		ABS V0
S	S = Type A = (IP54*) D/U = Type B = (IP65*)		IP54 = S IP65 = D/U
M	6		32

\*Product exceeds minimum requirements of EN54-3  
 See [www.fulleon.com](http://www.fulleon.com)  
 Le produit dépasse les exigences minimum de EN54-3  
 Voir [www.fulleon.com](http://www.fulleon.com)  
 Das Erzeugnis erfüllt die Mindestanforderungen von EN54-3.  
 Siehe [www.fulleon.com](http://www.fulleon.com)  
 Il prodotto supera i requisiti minimi previsti dalla norma EN54-3  
 Vedi [www.fulleon.com](http://www.fulleon.com)  
 Product overtreft de minimale vereisten van EN54-3.  
 Zie [www.fulleon.com](http://www.fulleon.com)  
 El producto excede los requisitos mínimos de la norma EN54-3  
 Véase [www.fulleon.com](http://www.fulleon.com)  
 Produkten överträffar minsta krav enligt EN54-3  
 Se [www.fulleon.com](http://www.fulleon.com)  
 Parametry techniczne produktu przekraczają minimalne  
 wymagania normy PN EN54-3, szczególnie [www.fulleon.com](http://www.fulleon.com)



Installation must be in accordance with relevant national wiring regulations or codes for the intended application and voltages employed.  
 L'installation doit être conforme à la réglementation ou aux codes nationaux de câblage en vigueur, en vue de l'application désirée et des tensions utilisées.  
 Das Gerät ist für die vorgesehene Anwendung und verwendete Spannung gemäß relevanten Bundesvorschriften und Regeln zur Verklebung zu installieren.  
 L'installazione deve essere eseguita in conformità con le disposizioni nazionali vigenti sul cablaggio o i corrispondenti codici per l'applicazione prevista e le tensioni impiegate.  
 Installeer moet overeenstemmen met relevante nationale wetgeving of codes voor kabels bij de bedoelde toepassingen en gebruikte voltages.  
 La instalación debe estar acorde con las principales normas nacionales para cableado o códigos para la aplicación prevista y los voltajes empleados.  
 Installation måste ske i enlighet med landets gällande lagar eller bestämmelser för dragnag av elektriska kablar till den avsedda enheten och den aktuella spänningen.  
 Instalacja musi być wykonana zgodnie z obowiązującymi przepisami prawa i wytycznymi zgodnie z pozycjonowaniem sygnalizatora i z wartościami zastosowanych napięć.



	(1)	(2)	12345	Pattern	Frequency Hz	Rate	Depiction	Main Application	Roshni LP (ROLP)					
									mA	dB(A) @1M	EN54-3 15Vdc see notes		mA	dB(A) @1M
1	14	11111	Alternating	800 & 970	2Hz (250ms-250ms)	BS Fire	6	95	*	13	101	*		
2	14	11110	Sweep	800 to 970	7Hz (7/s)	BS Fire	8	94	*	12	100	*		
3	14	11101	Sweep	800 to 970	1Hz (1/s)	BS Fire	6	95	*	12	102	95		
4	14	11100	Continuous	2850	Steady	General Purpose	16	99	*	32	105	*		
5	4	11011	Sweep	2400 to 2850	7Hz	General Purpose	16	103	*	32	109	*		
6	4	11010	Sweep	2400 to 2850	1Hz	General Purpose	16	105	*	32	112	*		
7	14	11001	Slow whoop	500 to 1200	3s sweep, 0.5 s silence, then repeat	Dutch fire (NEN 2575)	6	97	93	12	103	97		
8	14	11000	Sweep (DIN)	1200 to 500	1Hz	German fire (DIN 33 404)	7	96	93	15	103	94		
9	4	10111	Alternating	2400 & 2850	2Hz (250ms-250ms)	General Purpose	15	99	*	31	105	*		
10	14	10110	Intermittent	970	0.5Hz (1s On/1s Off)	PFEER alert	5	95	*	8	101	*		
11	14	10101	Alternating	800 & 970	1Hz (500ms-500ms)	BS Fire	6	95	*	12	101	*		
12	4	10100	Intermittent	2850	0.5Hz (1s On/1s Off)	General Purpose	9	99	*	17	105	*		
13	14	10011	Intermittent	970	0.8Hz (250ms On/1s Off)	General Purpose	3	94	*	5	101	*		
14	14	10010	Continuous	970	Steady	PFEER toxic gas	7	95	93	14	101	95		
15	14	10001	Alternating	554 & 440	100ms-400ms	French fire (NFS 32-001)	8	96	*	17	102	*		
16	16	10000	Intermittent	660	3.3Hz (150ms On/150ms Off)	Swedish (Air Raid)	4	94	*	6	100	*		
17	17	01111	Intermittent	660	0.28Hz (1.8s On/1.8s Off)	Swedish (Local warning)	4	95	*	7	101	*		
18	18	01110	Intermittent	660	0.05Hz (13s Off / 6.5Hz On)	Swedish (Pre-mess)	3	95	*	6	101	*		
19	19	01101	Continuous	660	Steady	Swedish (All clear)	5	95	*	10	101	*		
20	20	01100	Alternating	554 & 440	0.5Hz (1s On/1s Off)	Swedish (Turn out)	7	96	*	16	102	*		
21	21	01011	Intermittent	660	1Hz (500ms-500ms)	Swedish general purpose	4	94	*	6	101	*		
22	14	01010	Intermittent	2850	4Hz (150ms On/100ms Off)	Pelican crossing	12	98	*	27	104	*		
23	14	01001	Sweep	800 to 970	50Hz	BS Fire	6	93	*	12	100	*		
24	4	01000	Sweep	2400 to 2850	50Hz	General Purpose	15	102	*	32	108	*		
25	25	00111	Intermittent	970	3 x 500ms pulses, 1.5s silence, then repeat	ISO 8201	4	95	*	7	101	*		
26	26	00110	Intermittent (*)	800 to 970	3 x 500ms pulsed sweep, 1.5s silence, then repeat	ISO 8201	4	95	*	6	102	*		
27	27	00101	Intermittent (*)	970 & 800	3 x 500ms pulsed sweep, 1.5s silence, then repeat	ISO 8201	3	94	*	6	101	*		
28	10	00100	Alternating	800 & 970	2Hz (250ms-250ms)	BS Fire	6	95	*	12	101	*		
29	988Hz	00011	Alternating	990 & 650	2Hz (250ms-250ms) (Symphoni tones)	BS Fire	10	99	93	20	105	96		
30	510Hz	00010	Alternating	510 & 610	2Hz (250ms-250ms) (Squashni Micro tones)	BS Fire	8	94	91	16	100	92		
31	14	00001	Sweep	300 to 1200	1Hz	General Purpose	10	98	*	14	103	*		
32	510Hz	00000	Alternating	510 & 610	1Hz (500ms-500ms)	BS Fire	8	95	*	16	100	*		

- (i) Tones certified under the CPD (Fire Alarm Applications) are shown in the column marked EN54-3
- (ii) All other SPL measurements are taken 'on axis' & are not third party verified.
- (iii) Detailed EN54-3 polar SPL measurements are available in M05-004
- (i) Les tons certifiés dans le cadre de la DPC (application alarme incendie) sont indiqués dans la colonne intitulée EN54-3.
- (ii) Toutes les autres mesures NPA sont relevées « sur axe » et ne sont pas vérifiées par un tiers.
- (iii) Les mesures NPA polaires détaillées EN54-3 sont disponibles dans M05-004
- (i) Die nach CPD (Feuermelderanwendung) zertifizierten Töne sind in Spalte EN54-3.
- (ii) Alle anderen Schalldruckmessungen wurden von akustischen Mittelpunkt ab gelesen und von keiner unabhängigen Stelle verifiziert.
- (iii) Detaillierte Polar-SPL-Messungen gemäß EN54-3 sind erhältlich in M05-004
- (i) I toni della sirena certificati CPD (applicazione allarme anticendio) sono indicate nella colonna contrassegnata con EN54-3.
- (ii) Tutte le altre misurazioni SPL sono state rilevate "sull'asse" e non sono state verificate da terzi.
- (iii) Le misurazioni SPL polari ai sensi della norma EN54-3 sono disponibili in M05-004
- (i) U vindt tonen die onder CPD (brandalarmtoepassing) zijn gecertificeerd, in de kolom waar EN54-3 staat vermeld.
- (ii) Alle andere SPL-afmetingen zijn via de 'as' gedaan en niet door derden geverifieerd.
- (iii) Uitgebreide polaire SPL-afmetingen voor EN54-3 zijn beschikbaar in M05-004

- (i) Los sonidos certificados por el CPD (aplicación para alarmas de incendios) se muestran en la columna marcada con EN54-3.
- (ii) Cualquier otra medida del SPL (nivel de intensidad acústica) se toma "sobre el eje" y no está verificada por terceras partes.
- (iii) Las medidas detalladas del SPL polar EN54-3 están disponibles en M05-004
- (i) Signaler som är certifierade för CPD (brandvarnare) visas i kolumnen märkt EN54-3.
- (ii) Alla övriga mätningar av ljudtrycket har genomförts "direkt intill" och är inte bekräftade av tredje part.
- (iii) Detaljerade polära mätningar av ljudtrycket enligt EN54-3 finns under M05-004
- (i) Sygnalytone zgodne z certyfikatem CPD dla systemów sygnalizacji pożaru wskazane są w kolumnie EN54-3.
- (ii) Wszystkie pomiary SPL są wykonane w osi sygnalizatora i nie były poddane weryfikacji przez inną stronę.
- (iii) Szczegóło pomiary kątowych SPL wg EN54-3 dostępne są w M05-004.

CE marking under the CPD was affixed on: (see batch code on product)  
 La marque CE dans le cadre de la DPC a été apposée le : (voir code de lot sur le produit)  
 CE-Kennzeichnung unter dem CPD angebracht am: (siehe Chargencodem am Erzeugnis).  
 La marcatura CE ai sensi della direttiva CPD è stata apposta su: (vedi codice sul prodotto)  
 CE-märkning under CPD is toegewezen d.d.: (zie batchcode op het product)  
 Oznakowanie CE i CPD zostało naniesione na produkt.  
 Fulleon Ltd, Cwmbran, South Wales, U.K.  
[www.fulleon.com](http://www.fulleon.com)

**solista maxi**



9 ~ 60VDC

Start-up current: < 22mA Courant de démarrage: < 22mA

	Continuous			Single Flash			Double Flash			
	Low	Med	High	Low	Med	High	Low	Med	High	
Red	12V	3mA	4mA	10mA	5mA	8mA	13mA	5mA	8mA	14mA
	24V	3mA	5mA	9mA	5mA	11mA	3mA	5mA	12mA	
	48V	4mA	6mA	10mA	3mA	4mA	10mA	3mA	6mA	8mA
Green	12V	3mA	4mA	10mA	5mA	8mA	13mA	5mA	8mA	14mA
	24V	3mA	5mA	9mA	5mA	11mA	3mA	5mA	12mA	
	48V	4mA	6mA	10mA	3mA	4mA	10mA	3mA	6mA	8mA
Amber	12V	3mA	4mA	10mA	5mA	8mA	13mA	5mA	8mA	14mA
	24V	3mA	5mA	9mA	5mA	11mA	3mA	5mA	12mA	
	48V	4mA	6mA	10mA	3mA	4mA	10mA	3mA	6mA	8mA
White	12V	3mA	4mA	10mA	5mA	8mA	13mA	5mA	8mA	14mA
	24V	3mA	5mA	9mA	5mA	11mA	3mA	5mA	12mA	
	48V	4mA	6mA	10mA	3mA	4mA	10mA	3mA	6mA	8mA
Blue	12V	3mA	5mA	15mA	6mA	12mA	15mA	5mA	10mA	10mA
	24V	3mA	5mA	12mA	4mA	9mA	12mA	3mA	9mA	7mA
	48V	4mA	6mA	12mA	5mA	7mA	12mA	3mA	5mA	7mA

0.5mm ~ 2.5mm

-10°C ~ +55°C

FR ABS & Polycarbonate Translucent

S IP 21C D IP 65

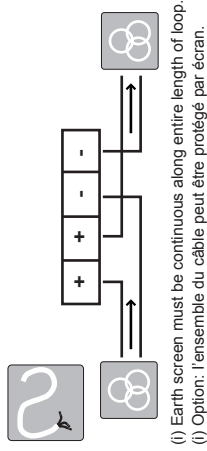
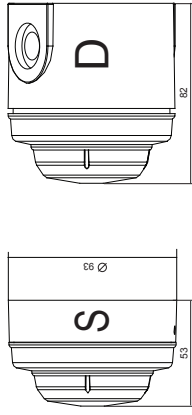
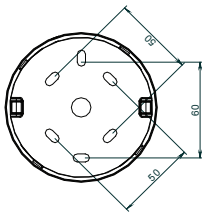
1 Hz

WARNING: Do NOT use high voltage testers if ANY equipment is connected to the system.  
ATTENTION: Ne pas utiliser de testeurs haute tension lorsqu'un équipement est connecté au système.

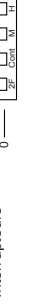
Fulleon Ltd, Llantarnam Park, Cwmbran, NP44 3AW  
www.fulleon.com



25-8289-E

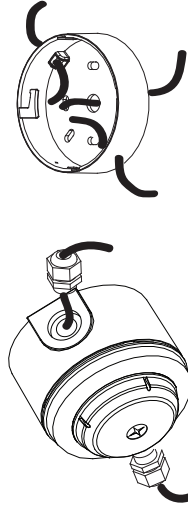
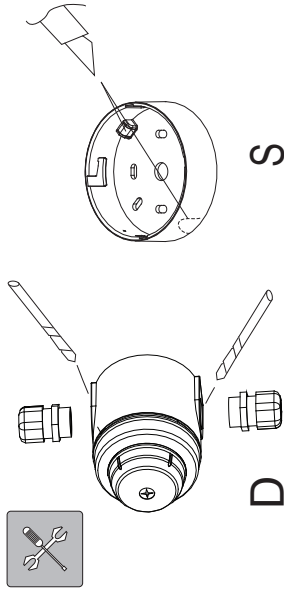
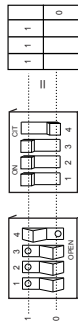


Switches settings  
Interrupteurs



Switches/Interrupteurs

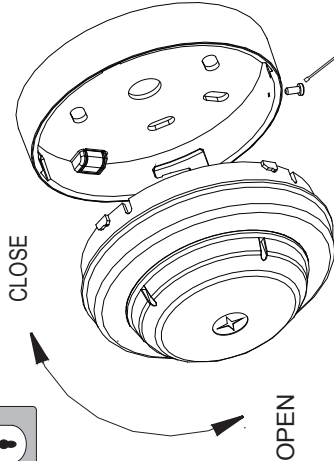
	1	2	3	4
Continuous	0	0		
1Flash	1	1		
2Flash	0	1		
Low			1	1
Medium			0	1
High			1	0
Flash rate				
Current setting				



CLOSE



OPEN



Care should be taken to ensure the cable does not put stress on the circuit board.  
Veillez vous assurer que le câble ne crée pas de pression sur le circuit imprimé.

Supplied Format

Electronic Data

X

File Name : 25-8289-E

Text Pages

No. of Text Pages : 1

Print Colours : 1

Paper Spec : Stock White 70gsm

Finished Manual / Leaflet

Type of Binding : None

Hole Punching : None

Shrink Wrapping : None

Folding Details : See below

Final Dimensions :

A5 (148.5x210mm) Single Sided

A5 (148.5x210mm) Double Sided

A4 (297x210mm) Single Sided

A4 (297x210mm) Double Sided

1



2



3



4



Manual Details

Part No.	25-8289-E
Description	Leaflet
Model	
Date	06/04/11
Issue No.	E

Approvals

Originated	G. Haack
Checked	
Approved	

