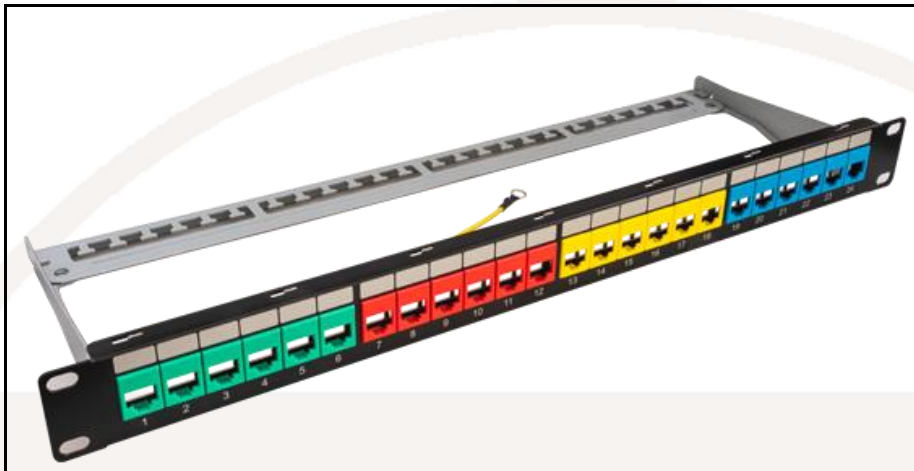


## Colour Coded 24 Port Keystone Patch Panel



### **24 Port Keystone Patch Panel (FFK24mtCOL4)**

TUK's colour coded 24 port patch panel suits most keystones and has a range of configurable bezels to easily identify the ports used for different purposes

#### **Features**

- Moveable coloured bezels allow for easy differentiation of data sources
- Supplied in a range of empty or pre-kitted panels with bezels available in green, blue, red, yellow and black
- Clear numbering on the front provides a quick, easy way to identify cable run
- 'Write on' label facility for port identification
- Accepts keystones up to 17.4mm wide
- Suitable for UTP and FTP installations
- Supplied with a removeable rear cable management bar, cable ties, 4 sets of M6 black cage nuts and 25cm long earth wire

#### **Range**

FFK24mtCOL4 – panel supplied with 6 bezels in each of blue, green, red and yellow

FFK24mtCOL – empty panel without bezels

FFK24mtCOLbl/ FFK24COLgn/ FFK24COLrd/ FFK24COLyw – panel supplied with 24 bezels in blue/green/red/yellow

FFKCOLbl/bk/gn/rd/yw – pack of 6 bezels in blue/black/green/red/yellow

### **Specifications**

#### **FFK24mtCOL4**

Weight 825g (including primary packaging)  
Dimensions: 520 x 65 x 75mm approx. (including primary packaging).  
Colour:  
front: black + blue, green, red and yellow bezels  
rear: silver  
Material:  
Panel: cold-rolled steel sheet 1.5mm thick  
Cable management: Electro galvanized cold rolled mild steel  
Bezels: Polypropylene

#### **FFK24mtCOL**

Weight 810g (including primary packaging)  
Dimensions: 520 x 65 x 75mm approx. (including primary packaging).  
Colour:  
front: black  
rear: silver  
Material:  
Panel: cold-rolled steel sheet 1.5mm thick  
Cable management: Electro galvanized cold rolled mild steel

#### **FFK24mtCOL/bl/gn/rd/yw**

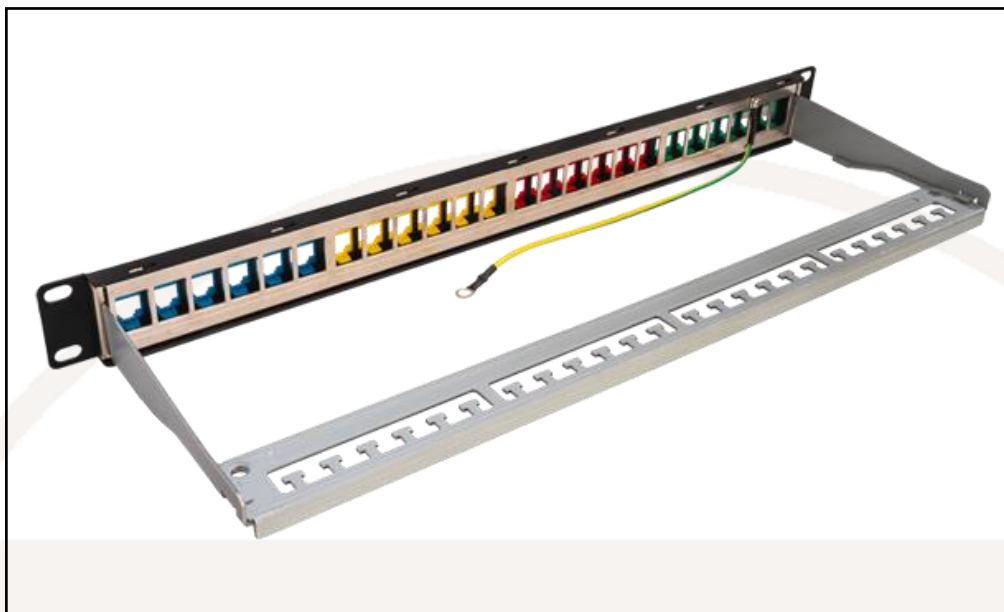
Weight 825g (including primary packaging)  
Dimensions: 520 x 65 x 75mm approx. (including primary packaging).  
Colour:  
front: black + (one of) blue, green, red or yellow bezels  
rear: silver  
Material:  
Panel: cold-rolled steel sheet 1.5mm thick  
Cable management: Electro galvanized cold rolled mild steel  
Bezels: Polypropylene

**Packaging:** Supplied in an individual carton

#### **FFKCOLbl/bk/gn/rd/yw**

Weight 3g (including primary packaging)  
Dimensions: 45 x 25 x 10mm approx. (including primary packaging).  
Colours: blue, black, green, red and yellow  
Material: Polypropylene

**Packaging:** Supplied in 6s in poly bags then in pack of 4 (total 24pcs)

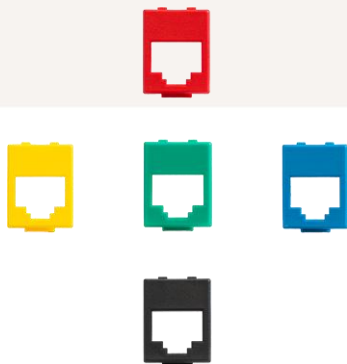

**EAN:**

<b>Panels</b>		<b>Bezels</b>	
FFK24mtCOL:	5055386512642	FFKCOLbk:	5055386512697
FFK24mtCOL4:	5055386512741	FFKCOLgn:	5055386512703
FFK24mtCOLgn:	5055386512659	FFKCOLbl:	5055386512710
FFK24mtCOLbl:	5055386512666	FFKCOLrd:	5055386512727
FFK24mtCOLrd:	5055386512673	FFKCOLyw:	5055386512734
FFK24mtCOLyw:	5055386512680		

**Commodity Code:** 85366990



Create a custom panel using our range of colour coded bezels, available in Red, Yellow, Green, Blue and Black in conjunction with the FFK24mtCOL

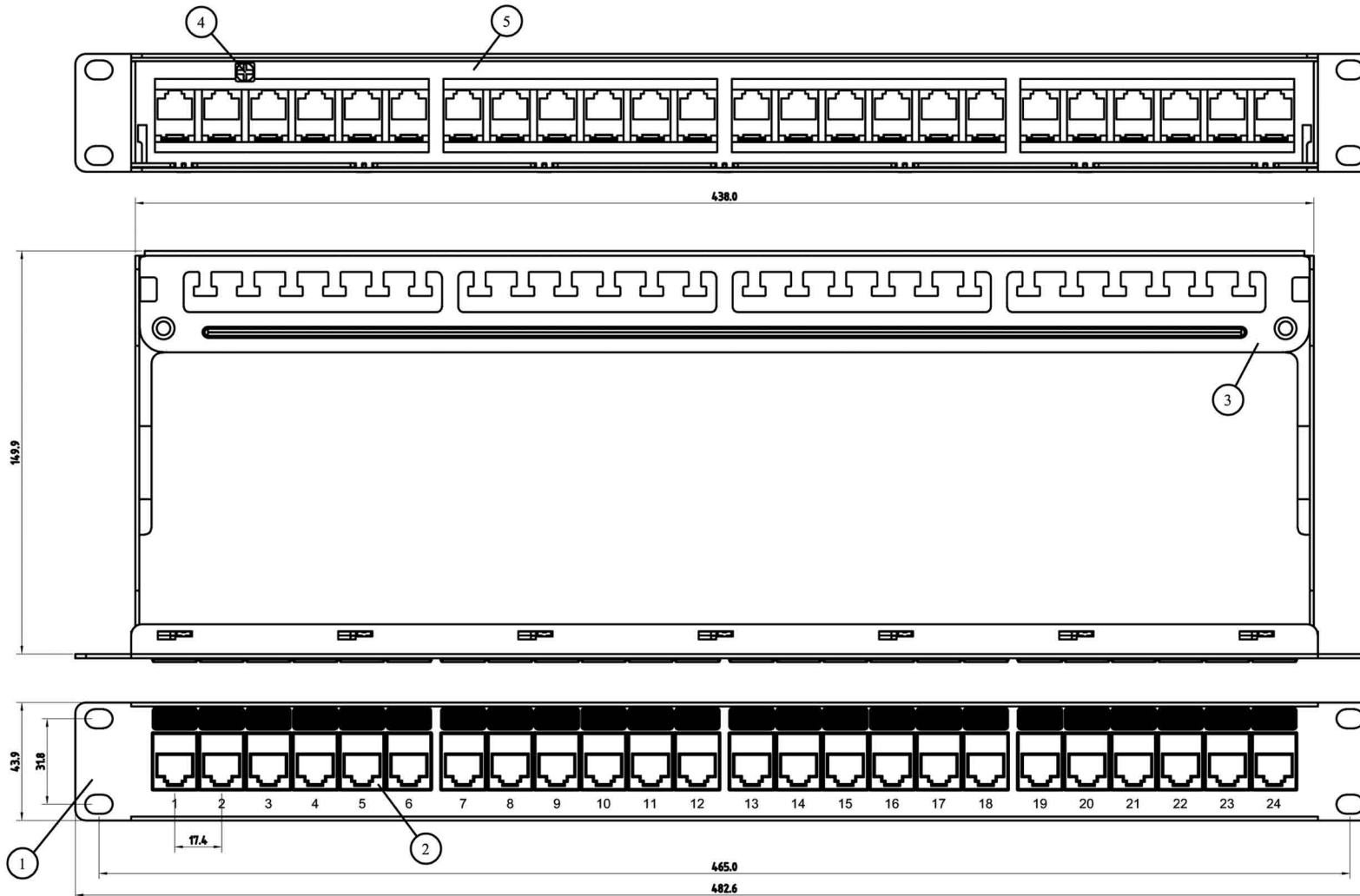


Example of black bezels mounted in panel

<https://tuk.co.uk/product/colour-coded-rj45-port-bezels/>

ROHS Compliant

Code: FFK24mtCOL



COMPONENTS			
ITEM	PART NAME	MATERIAL	QTY
5	Back Plate	Cold rolled steel	1
4	Earth Screw	Carbon steel	1
3	Cable Management	Plated rolled steel	1
2	Bezel	Polypropylene	24
1	1U Patch Panel Black	Cold rolled steel	1