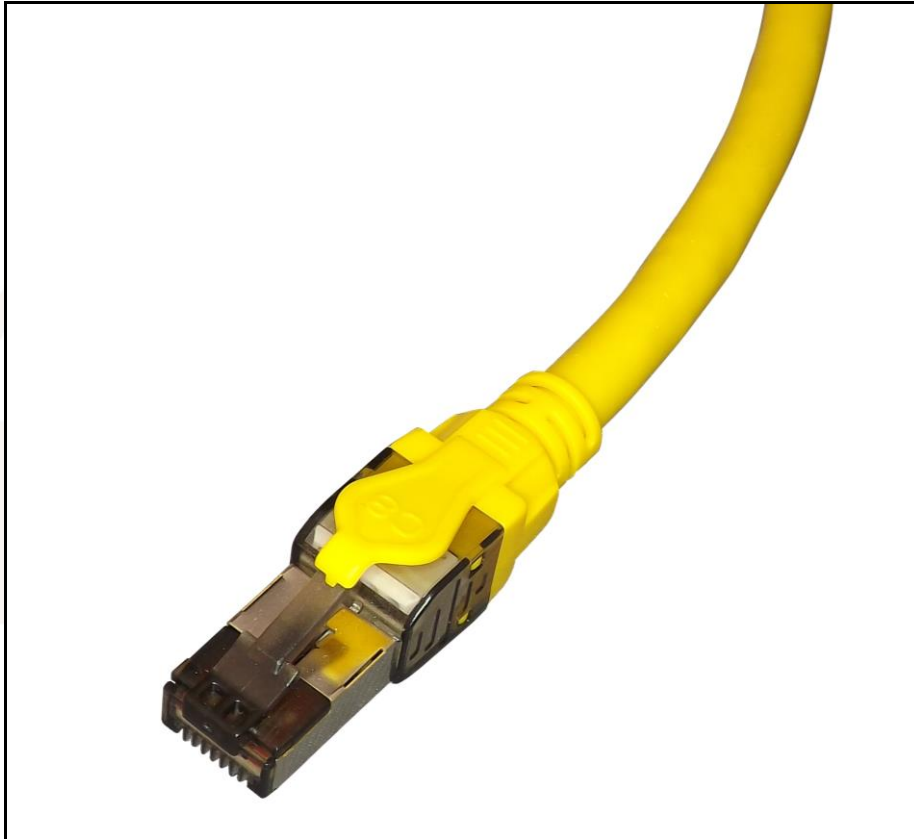


Category 8 Patch Leads, Shielded



High Performance Category 8 Patch Leads, Shielded (SEPZ1/2/3/5yw)

TUK's Category 8 patch leads are designed, manufactured and tested in accordance with the ISO and TIA standards for Cat 8. Ideal for installation in areas that require high data transfer speeds exceeding 40Gbps. Factory manufacture ensures sensible pricing compared to equivalent product produced with field termination plugs.

Features

- Transmission performance in compliance with the ANSI/TIA 568C.2-1 specifications for Category 8 cabling systems
- Compliant with IEC60512-99-001 – suitable for use with 4PPoE (IEEE 802.3bt Type 4 PoE++ 100W)
- Consists of 4 twisted pairs of 24AWG screened stranded cable
- Terminated with high gold plated RJ45 shielded Category 8 plug
- Individually tested as part of a 30m channel – see graphic below

Specifications

- Colour: Yellow

- Material:
 - RJ45 plug
 - Housing: PC, UL 94V-2, transparent black colour
 - Contact material: Nickel plated phosphor bronze
 - Contact finish: 50µ"/1.27µm gold plated on surface contact area
 - Shield: copper with nickel plated
 - PCB: UL 94V-0
 - The structure complies with the IEC60603-7 requirement
 - Strain relief
 - PC, UL 94V-2, yellow colour (RAL1021)
 - Cable
 - Jacket: LSZH
 - Conductor: 24 AWG/0.51mm stranded copper
 - Shield: Aluminium foil on each pair, tinned copper clad with steel braid
- Cable structure: Category 8 STP/FTP, 4 twisted pair

- Available in below lengths or to order:
 - 1 metre SEPZ1yw
 - 2 metre SEPZ2yw
 - 3 metre SPEZ3yw
 - 5 metre SEPZ5yw

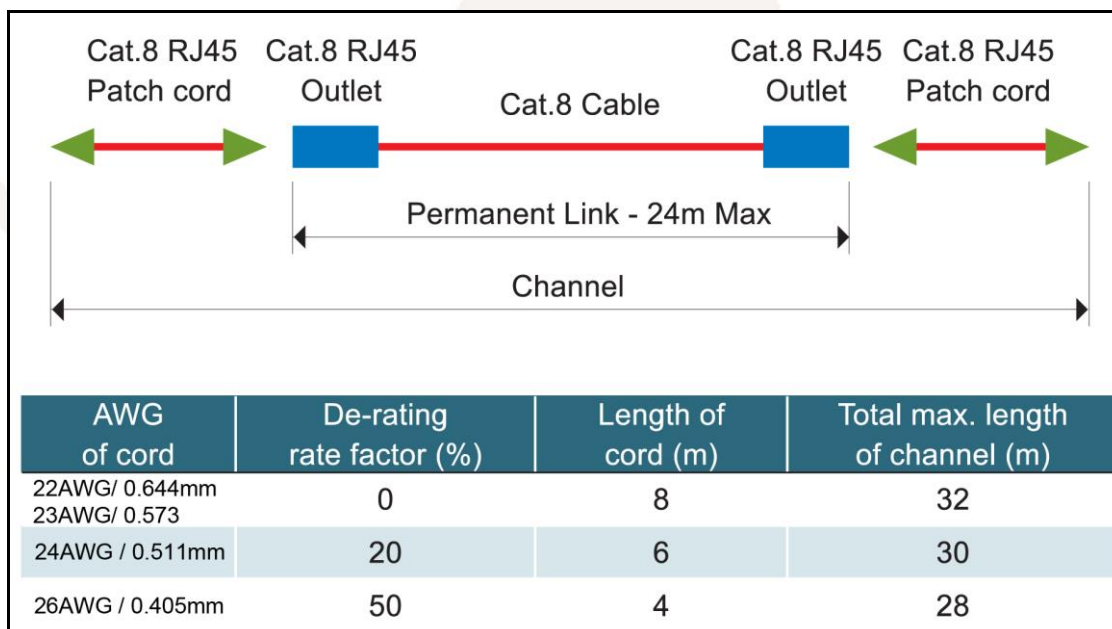
EAN:

SEPZ1yw 5055386507280
 SEPZ2yw 5055386507297
 SEPZ3yw 5055386507303
 SEPZ5yw 5055386507310

Commodity Code: 85444290

Packaging:

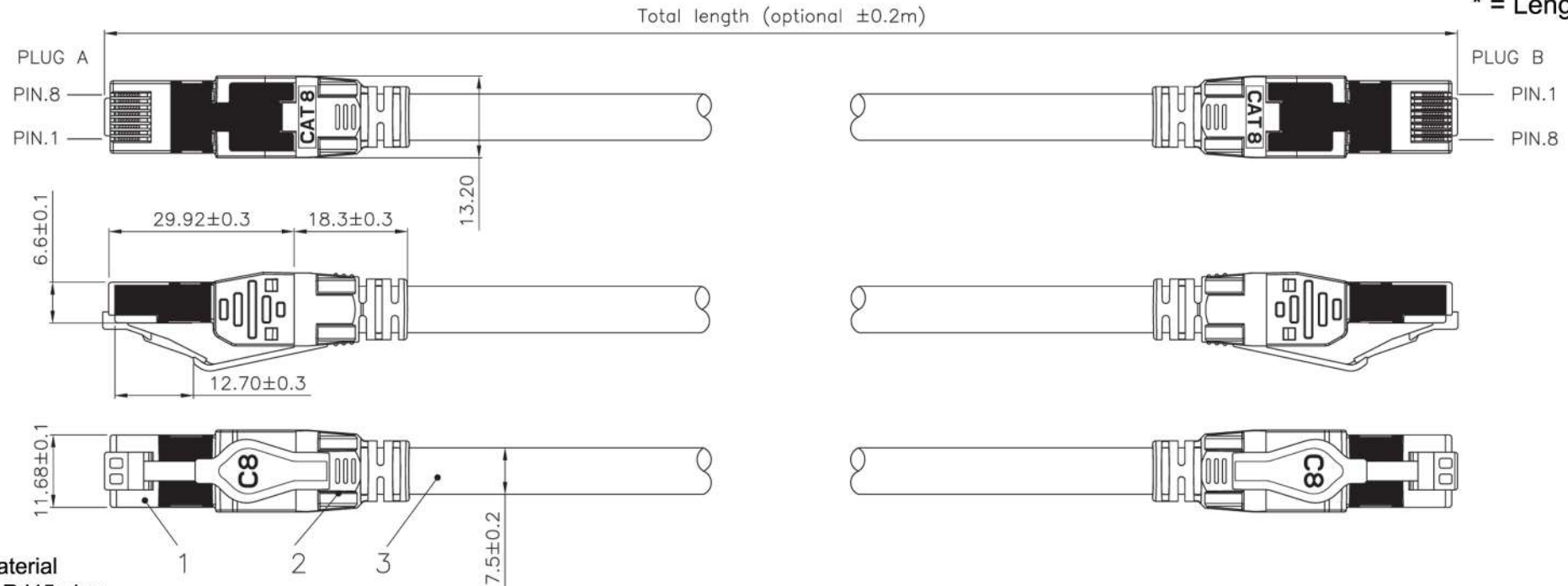
Individually polythene bagged and marked with length



ROHS Compliant

Code: **SEPZ*yw**

* = Length



Material

1. RJ45 plug

Housing: PC, UL 94V-2, transparent black colour
 Contact material: Nickel plated phosphor bronze
 Contact finish: 50 micro-inch gold plated on surface contact area
 Shield: copper with nickel plated
 PCB: UL 94V-0

The structure complied with the IEC60603-7 requirement

2. Strain relief: PC, UL 94V-2, yellow colour (RAL1021)

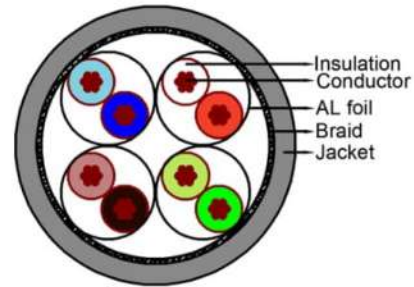
3. Cable

Cat 8 STP/FTP 4 twisted pair
 Jacket: LSZH material
 Conductor: 24 AWG/0.51mm stranded copper
 Shield: Aluminium foil on each pair, tinned copper clad with steel braid

4. Cable structure: STP/FTP, 4 twisted pair

Technical Data Sheet

Cat 8 S-FTP 4 Pairs 24AWG Screened Stranded Cable



Category & Standard Compliance	ANSI/TIA568.2-D Category 8, ISO/IEC TR11801-1-2017, IEC61156-10 Cat.8.1
Flammability rating	UL444 CM or CMR, IEC60332-1-2, IEC60332-3-24
LSZH	Acidity: IEC60754-2, Smoke density: IEC61034-2
Environmental Compliance	RoHS
Marking on Sheath	
LSZH	(T) S/FTP PATCH CABLE 24AWG 4PR LSZH RATED ANSI/TIA-568.2-D CAT.8 & ISO/IEC 11801 CLASS I XXXXXXXX-X XXXXM

Ordering information					
Sheath material	P/N	Color-RAL	P/N	Length/ Packaging	P/N
LSZH	ABSIA	Yellow-RAL 1021	06011021	1000FT, wooden reel	34

Cable material & structure	
Conductor	Bare Copper, 24AWG 0.192mm
Insulation	Skin-Foam-Skin PE, OD 1.4mm
Foil Screen	Aluminum/PET, T=50/12µm
Braid	Tinned copper, 0.1mm x 6 x 16, min. 45% coverage
Drain Wire	N/A
Sheath	LSZH, T=0.75mm, OD7.4 ± 0.2mm
Mechanical & environmental performance	
Pulling Tension	Max. 100N
Bending Radius	Min. 50mm(12x cable OD)
Installation Temperature	0 to 50°C
Storage Temperature	-20 to 70°C (Under static conditions)

Technical Data Sheet

Cat 8 S-FTP 4 Pairs 24AWG Screened Stranded Cable

Operation Temperature	-10 to 60°C (Under static conditions)
Electrical performance	
Conductor Resistance	Max. 4.2ohms / 30m, @20°C, ASTM D4566
Resistance Unbalance	Between 2 conductors, max. 4%, @20°C, ASTM D4566
Dielectric Strength	1200 V dc or 850 V ac for 2secs, UL444
Insulation Resistance	Test Voltage 100V-550V DC, min. 5000 mega-ohms / m, @20°C, ASTM D4566 & IEC61156-6
Mutual Capacitance	N/A
Capacitance Unbalance	Max. 99 pF / 30m @1kHz, Pair to Ground, @20°C, ASTM D4566
Propagation Delay Skew	Max. 13.5 ns / 30m, @20°C
Nominal Velocity Propagation	73.5%

Transmission Characteristics, 30M@20°C

FREQ MHz	*Attenuation (max. dB)	RL (min. dB)	NEXT (min. dB)	ACRF (min. dB)	TCL (min. dB)	Prop. Delay (max. ns)
1	2.0	20.0	75.3	75.0	40.0	171.0
4	2.0	23.0	66.3	67.0	40.0	165.5
8	2.0	24.5	61.8	60.9	36.5	163.9
10	2.0	25.0	60.3	59.0	35.0	163.5
16	2.2	25.0	57.2	54.9	31.9	162.8
20	2.5	25.0	55.8	53.0	30.5	162.5
25	2.8	25.0	54.3	51.0	29.0	162.2
31.25	3.1	25.0	52.9	49.1	27.6	162.0
62.5	4.4	23.6	48.4	43.1	23.1	161.4
100	5.6	22.2	45.3	39.0	20.0	161.1
200	7.9	20.1	40.8	33.0	15.5	160.8
250	8.9	19.4	39.3	31.0	14.0	160.7
300	9.8	18.9	38.1	29.5	12.8	160.6
400	11.4	18.0	36.3	27.0	11.0	160.6
500	12.8	17.3	34.8	25.0	9.5	160.5
600	14.1	16.8	33.6	23.4	8.3	160.4
1000	18.6	15.2	30.3	19.0	7.0	160.3
1500	23.2	14.0	27.7	15.5	7.0	160.3
2000	27.2	13.1	25.8	13.0	7.0	160.2

The Channel connection configuration consists of 24 metres horizontal cable and 6 metres (1+5 & 3+3 & 4+2) patch cord at both ends which are installed with TUK CAT8 keystone jacks and TUK CAT8 field termination plugs.

Rev Date: 14/01/2019