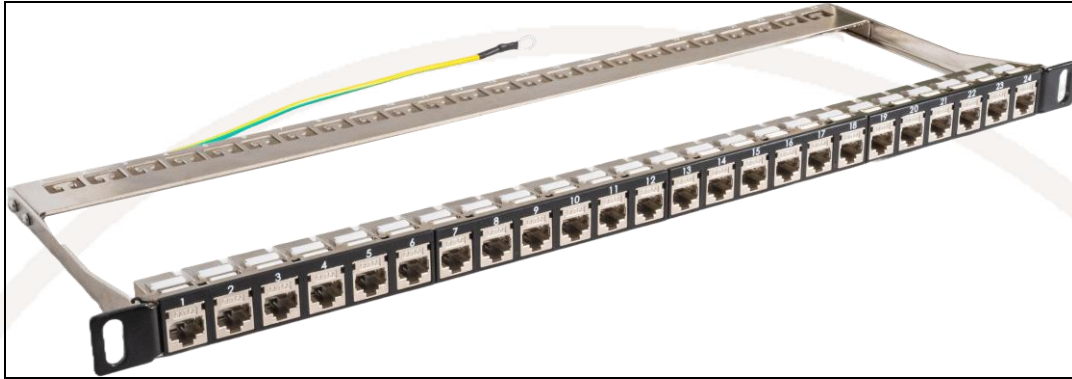


Category 6A 24 Port 0.5U STP Coupler Panel



Category 6A 24 Port 0.5U STP Coupler Panel (SGFACK24-0.5)

TUK's high density horizontal Category 6A 0.5U STP patch panel offers high performance in a compact package.

Features

- High performance, accommodates Category 6A at 10G
- Compliant with IEC60512-99-001 – suitable for use with IEEE 802.3at (PoE+) applications
- Fully shielded die-cast keystone body is robust as well as offering outstanding performance in eliminating alien cross-talk
- Clear numbering on the front provides a quick, easy way to identify cable run
- Supplied with a removeable rear cable management bar, 2 sets of M6 black cage nuts and 270mm long earth wire with fixing screws
- Gold plating on contacts accommodates multiple re-patching.

Specifications

- Weight: 903g approx.
- Dimensions: 505mm x 162mm x 30mm (W x D x H) approx. in primary packaging
- Colour:
 - front: black + silver
 - rear: silver
- Material:
 - Panel: cold-rolled steel with ABS plastic facia
 - Rear of panel and cable management: nickel plated
 - Contacts: 50µ"/1.27µm gold plating over nickel over phosphor bronze
 - Keystone housing: Zinc alloy

Packaging: Supplied assembled in an individual carton

EAN: 5055386511355

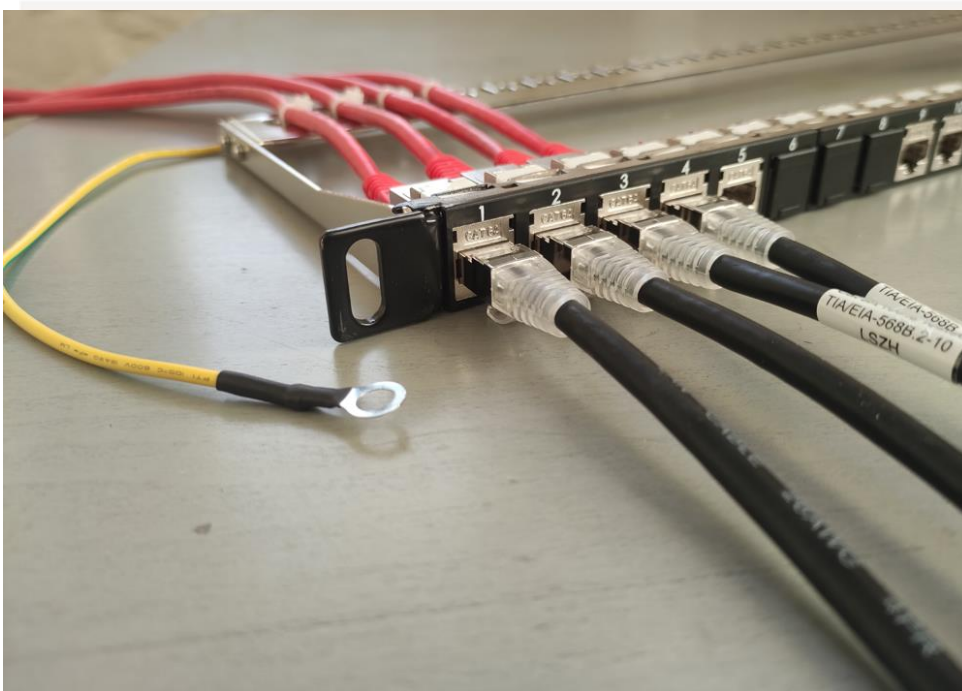
Commodity Code: 85177090

Country of Origin: China

For further information on components, please see links below:

SGACK2S <https://tuk.co.uk/product/category-6a-shielded-keystone-coupler/>

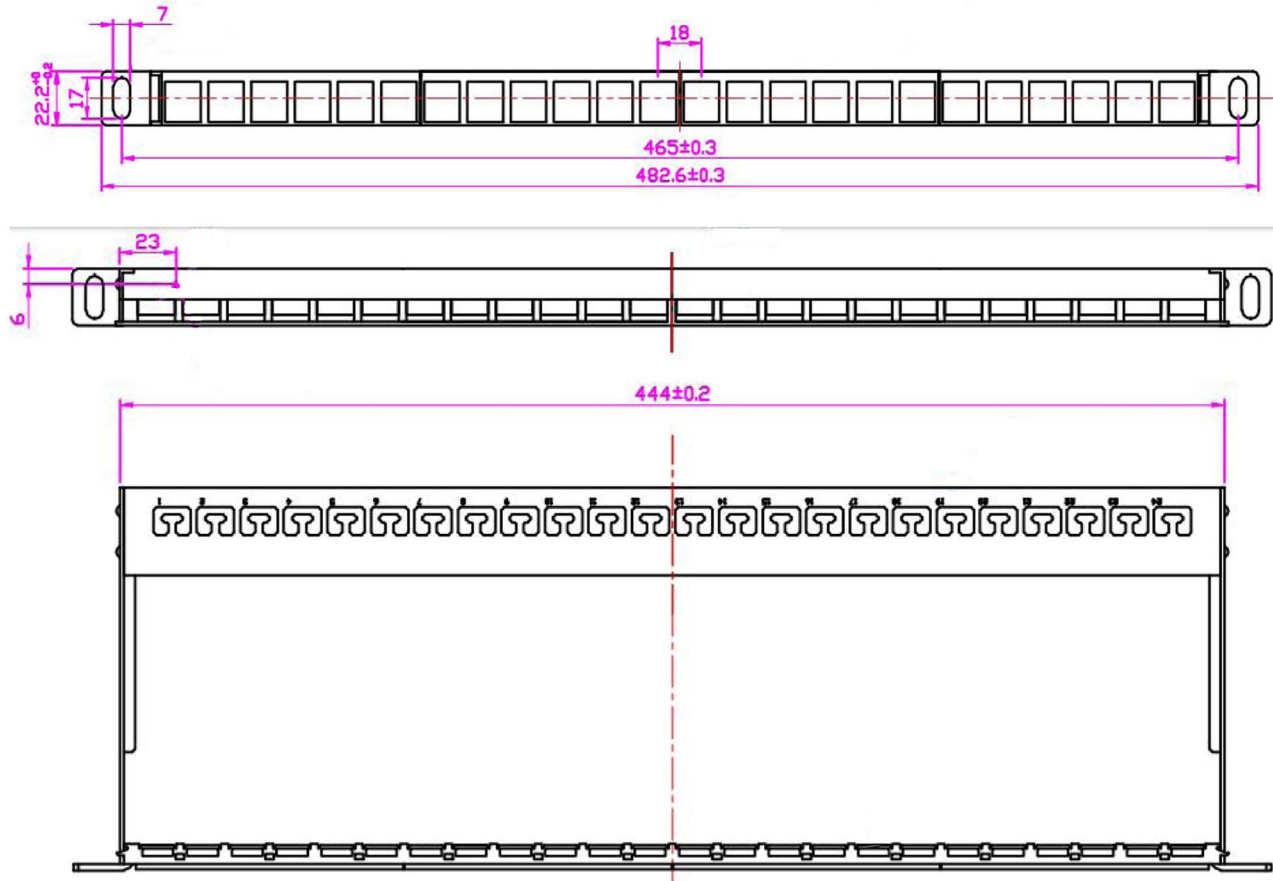
FFK24mt0.5pt <https://tuk.co.uk/product/0-5u-24-port-unpopulated-keystone-panel/>



Illustrative image

ROHS Compliant

Code: SGFACK24-0.5



Panel fitted with 24 couplers

