

# ExternalAntenna user manual

Updated March 11, 2026

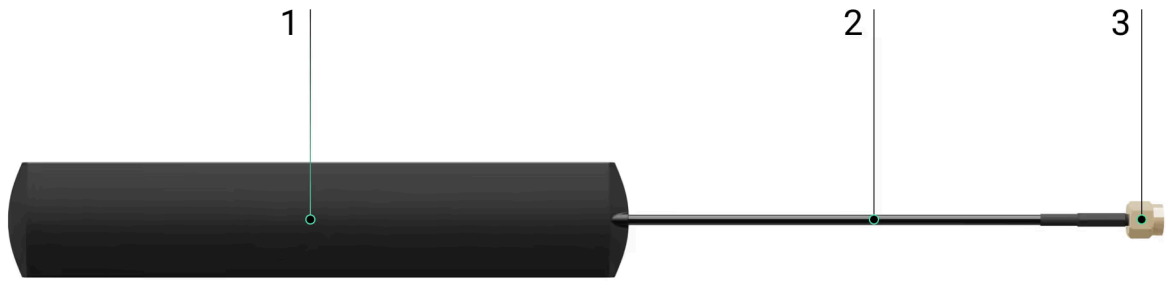


**ExternalAntenna** is an antenna for LTE or radio communication.

**ExternalAntenna** is an accessory and cannot be added or controlled through Ajax apps.

› [Buy ExternalAntenna](#)

## Functional elements



1. Antenna.
2. Coaxial cable.
3. Male SMA connector.

## Compatible hubs

[Check device compatibility.](#)

**i** ExternalAntenna is sold separately.

## Operating principle

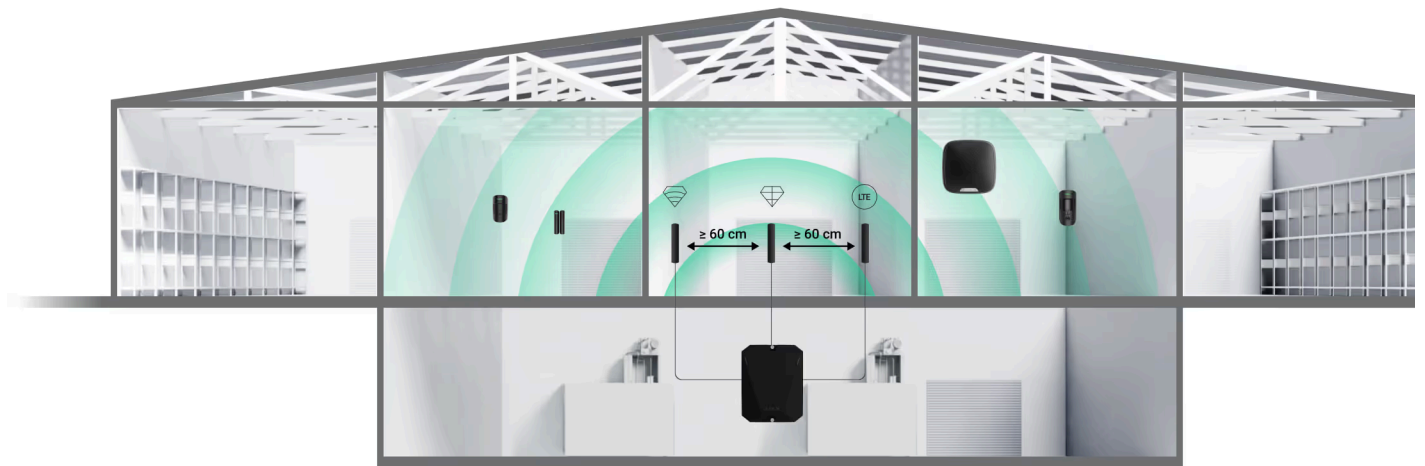
ExternalAntenna improves the communication between the hub and connected devices or cellular networks. It helps when installing the hub in a vault, a reinforced concrete room, or other places where the signal must pass through obstacles. The antenna can be connected to the required Jeweller, Wings, or Cellular connectors.

**i** For reliable radio communication, ExternalAntenna must be connected to both Win<sub>o</sub> and Jeweller channel connectors. A single antenna cannot guarantee proper channel operation.

# Selecting the installation site

When choosing the location of the antenna, consider the factors that affect its operation:

- The signal strength of the chosen communication channel (Jeweller, Wings, or Cellular).
- The distance between the antenna and the hub. When using two or more antennas, the distance between them should be at least 60 cm.
- Obstacles that affect the radio signal: walls, interfloor ceilings, and large objects in the room.



Consider the placement recommendations when designing your Ajax system. The security system must be designed and installed by specialists. The list of recommended Ajax partners is [available here](#).

## Where the antenna cannot be installed

1. Inside premises with temperature and humidity outside the permissible limits. This could damage the antenna.

2. In a place with a low signal level. This may result in the connection loss.
3. In places near metal objects and mirrors. Objects made of conductive materials can shield the antenna.

## Preparing to install

Before installing the external antenna, ensure the following:

- The hub is compatible with **ExternalAntenna**.
- The hub has a stable signal strength of 2–3 bars with a cellular network at the installation site.
- There is a stable signal strength of 2–3 bars with all added devices at the installation site.
- The length of the cable going from the hub to the installation site is sufficient.

## Cable arrangement

When preparing for cable routing, check the electrical and fire safety regulations in your region. Strictly follow these standards and regulations. Tips for cable arrangement are available in [this article](#).

## Cable routing

We recommend you read the [Selecting the installation site](#) section carefully before installation. Avoid deviations from the system project. Violating the basic installation rules and the recommendations of this manual may lead to the device's incorrect operation.

[Learn more](#)

## Installation

Before installation, ensure that you have selected the optimal device location that meets the requirements of this manual.



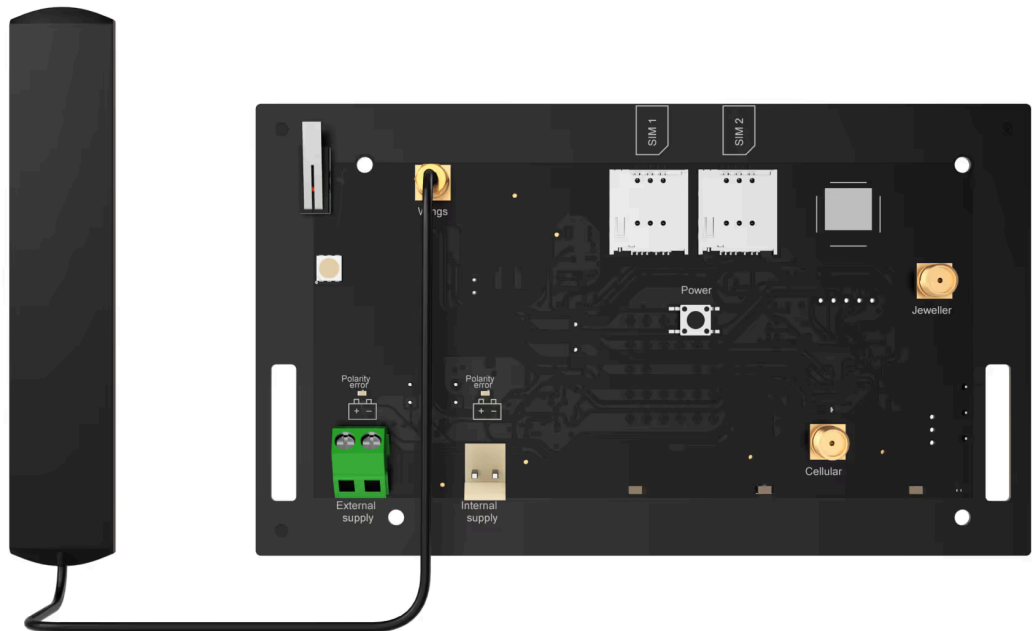
Only a professional electrician should install the device.

## How to install ExternalAntenna



Before installing the antenna, read the manual of the appropriate hub. Before starting the installation, make sure that the hub is not powered.


1. Remove the hub's front casing.
2. Identify the Jeweller, Wings, or Cellular connectors on the board.
3. Remove the insulating cap from the proper connector.
4. Connect the antenna's male SMA connector to the female SMA connector on the board.

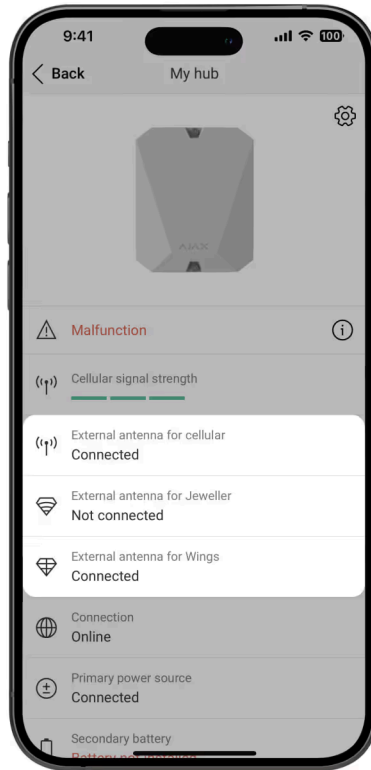


5. Turn on the hub.
6. Close the hub's casing.
7. Remove the protective film from the pre-applied double-sided adhesive tape.
8. Install the antenna at the selected location.
9. Check the connection status in the app.

# States

The hub states include information about the antenna connection status. These states can be found in [Ajax apps](#):

1. Go to the **Devices**  tab.
2. Select the hub from the list.



In case of ExternalAntenna breakage, the system will notify the user and CMS.

## Maintenance

ExternalAntenna does not require maintenance.

## Technical specifications

[All technical specifications](#)

## Compliance with standards

# Warranty

Warranty for products of Limited Liability Company “Ajax Systems Manufacturing” is valid for 2 years after purchase.

If the device does not function correctly, please contact Ajax Technical Support first. In most cases, technical issues can be resolved remotely.

## Warranty obligations

## User Agreement

### Contact Technical Support:

- e-mail
- Telegram



## Need help?

Explore the full potential of an Ajax system through detailed manuals, articles, tools, and FAQs. For immediate assistance, our AI-powered chatbot and professional technical support team are available 24/7.

[Ask a question](#)

### Subscribe

Subscribe to our emails about secure life. No spam.

[Subscribe](#)

## Request extra help

- +447451279411
- support@ajax.systems
- @AjaxSystemsSupport\_Bot
- Ask a question



Rating 4.8

4,500,000

people worldwide under Ajax protection

Suggest a feature



## Products

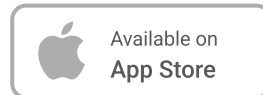
- Intrusion protection
- Video surveillance
- Fire and life safety
- Comfort and automation
- All products
- Services
- System integrations
- Ajax Ready products
- Fibra wired protocol
- Ajax radio protocols

## Solutions

- Customer stories
- Solutions by facility type
- Commercial fire detection and alarm system
- Wireless Grade 3 solution
- Video surveillance solution

## Software

- Ajax Security System
- Ajax PRO: Tool for Engineers
- Ajax Desktop
- Ajax PRO Desktop
- Ajax TV
- Ajax Translator PRO
- Ajax Cloud Signaling
- Ajax Media Player
- Scenarios



## Support

- Manuals and articles
- Compliance with standards

## Tools

- Ajax kit configurator

[Integration with Yale smart locks](#)

[Ajax device compatibility](#)

[Upgrades and retrofits](#)

[CMS software compatibility](#)

[Why Ajax](#)

[Ajax Services availability](#)

[How it works](#)

[Video storage calculator](#)

[Video device calculator](#)

[Battery life calculator](#)

[Radio communication range calculator](#)

[Switches and outlets configurator](#)

[Fibra power supply calculator](#)

[All web tools](#)

## Monitoring solutions and integrations

[Intrusion alarm monitoring](#)

[Video monitoring and visual alarm verification](#)

[Audio alarm verification](#)

## Company

[Blog](#)

[About us](#)

[Press page](#)

[Events](#)

[Career](#)

[Ajax Next](#)

[Reviews and feedback](#)

## For partners

[For partners](#)

[Ajax Academy](#)

[Partner Portal](#)

[Ajax PRO channel](#)

[🇬🇧 United Kingdom](#) [Privacy policy](#) [Report a vulnerability](#) [GDPR White Paper](#) [NDAA Statement](#) [Cookie policy](#)

[Anti-Spam Policy](#) [Ajax Services T&C](#) [End user agreement](#) [Warranty](#)

© 2026 AJAX SYSTEMS CH. All rights reserved