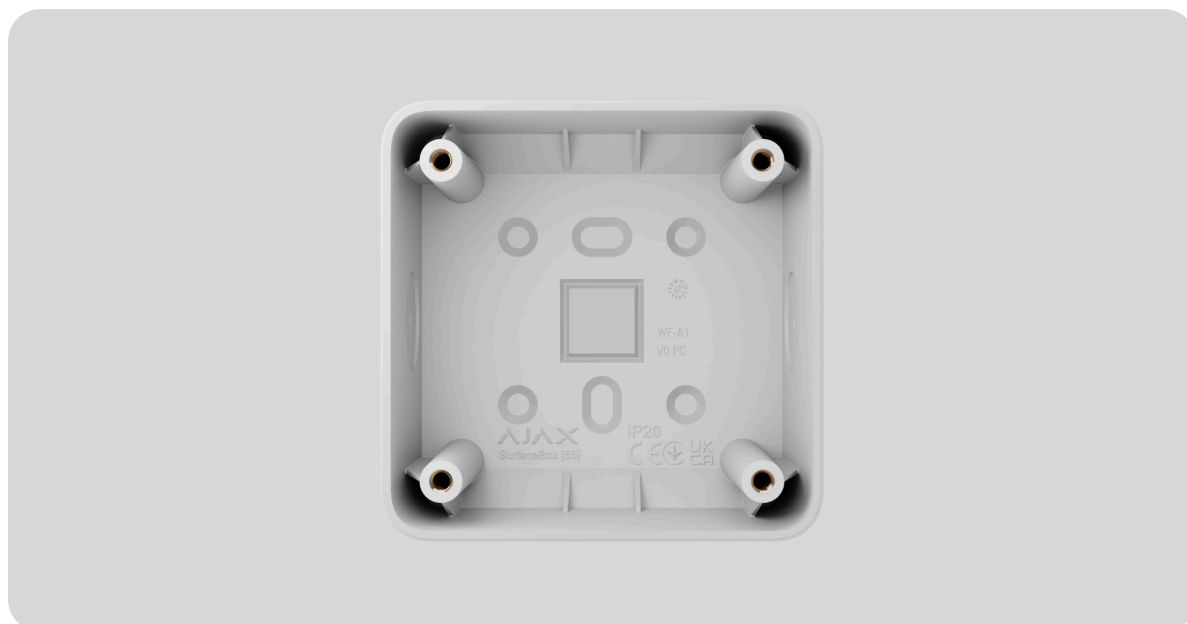


SurfaceBox [55] user manual

Updated December 3, 2024

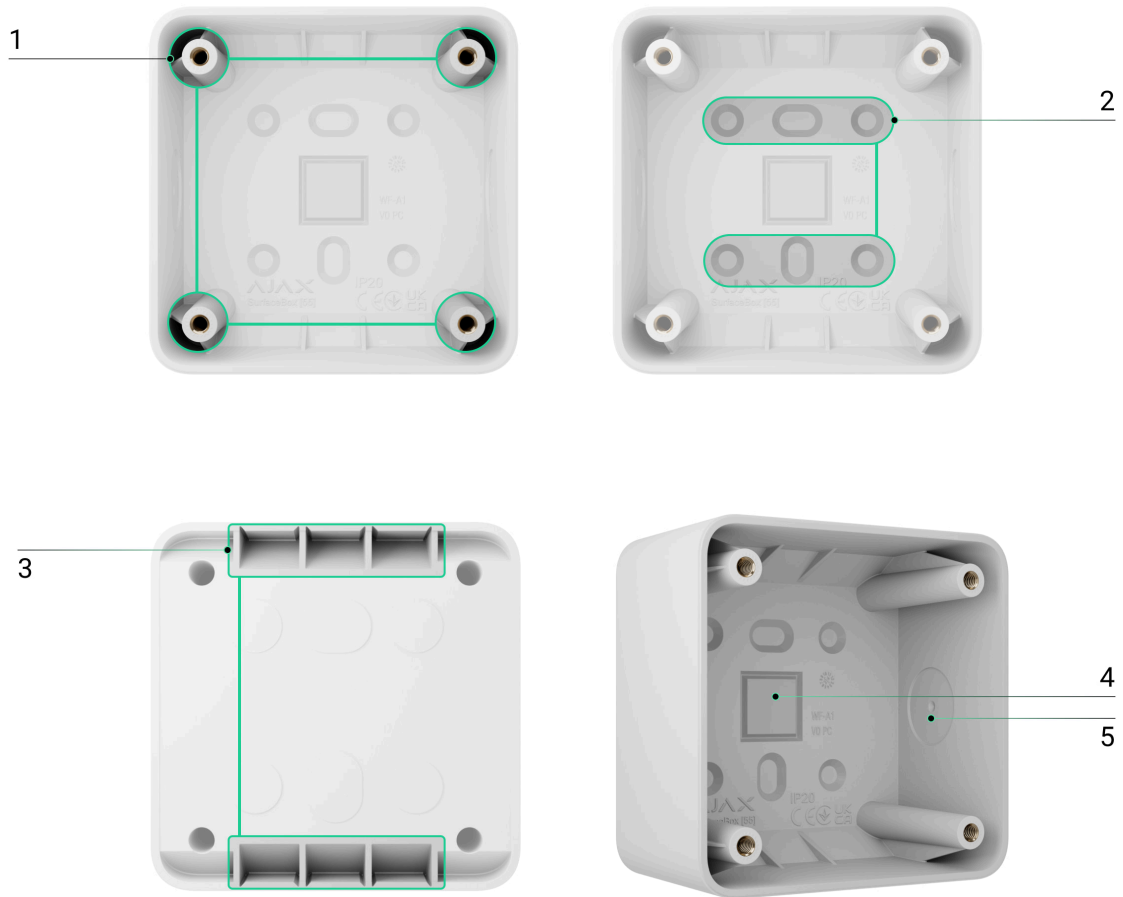


SurfaceBox [55] is a surface mounting box designed to install one LightSwitch or Outlet device of European type (55) form factor.

It provides a nice and neat solution for installing a LightSwitch or Outlet device when embedding a mounting box in the wall is impossible or impractical. The SurfaceBox [55] shape smoothly aligns with the LightSwitch touch-sensitive panel and Outlet cover.

[Buy SurfaceBox \[55\]](#)

Functional elements



1. Fixing points to attach a LightSwitch or Outlet device to SurfaceBox [55] with screws.
2. Fixing points to attach SurfaceBox [55] to the surface.
3. Holes to route cables from the back of the device.
4. Hole to route cables from the back of the device.
5. Recess for drilling a hole to route cables from the side. There are two recesses on the opposite sides of the device.

Compatible devices

You can install one LightSwitch or Outlet device of European type (55) form factor in SurfaceBox [55]. The following devices are compatible:

- **LightSwitch devices:**

- [LightSwitch \(1-gang\) Jeweller](#)
- [LightSwitch \(2-gang\) Jeweller](#)
- [LightSwitch \(2-way\) Jeweller](#)
- [LightSwitch \(2-gang/2-way\) Jeweller](#)
- [LightSwitch \(Crossover\) Jeweller](#)
- [LightSwitch \(Dimmer\) Jeweller](#)
- **Outlet devices:**
 - [Outlet \[type E\] Jeweller](#)
 - [Outlet \[type F\] Jeweller](#)
 - [Outlet \(basic\) \[type E\]](#)
 - [Outlet \(basic\) \[type F\]](#)



SurfaceBox [55] is sold separately from Ajax LightSwitch or Outlet devices.

Key features

SurfaceBox [55] provides a convenient solution when a LightSwitch or Outlet device should be installed directly on the wall or other surface where embedding a mounting box is impossible or impractical. Various fixing points allow mounting SurfaceBox [55] to any surface, such as concrete, brick, wood, drywall, and more.

The SurfaceBox [55] design enables routing cables inside from the back or side of the mounting box. For all options, refer to the [Cable routing](#) section.

The SurfaceBox [55] shape smoothly aligns with the LightSwitch touch-sensitive panel and Outlet cover.

Any certified electrician can handle device installation; no special training is required.



SurfaceBox [55] is designed for the installation of only one (solo) LightSwitch or Outlet device.

Selecting the installation site

The SurfaceBox [55] installation site must comply with mounting recommendations for a compatible device that is installed inside the mounting box. Follow these recommendations when designing the Ajax system project.

SurfaceBox [55] cannot be installed

1. Outdoors. The device is designed for indoor use only.
2. In locations where the temperature and humidity levels do not align with the specified operating parameters. This can damage SurfaceBox [55].
3. In locations where the conditions do not meet the requirements for a device installed inside SurfaceBox [55].

Preparing for installation

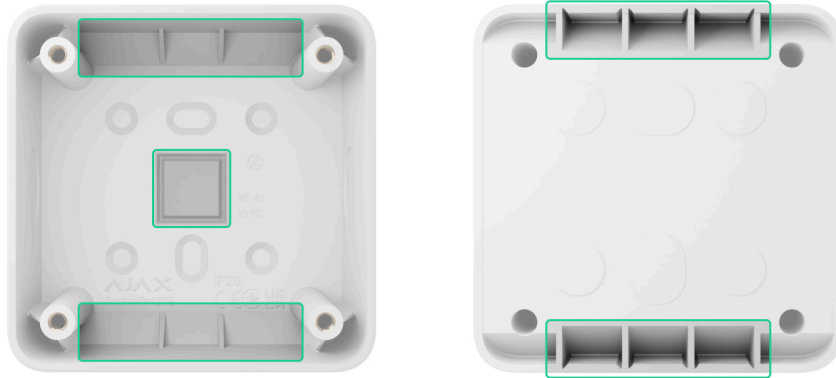
Cable arrangement

When preparing to lay cables, read the electrical and fire safety regulations in your area. Strictly follow these standards and regulations.

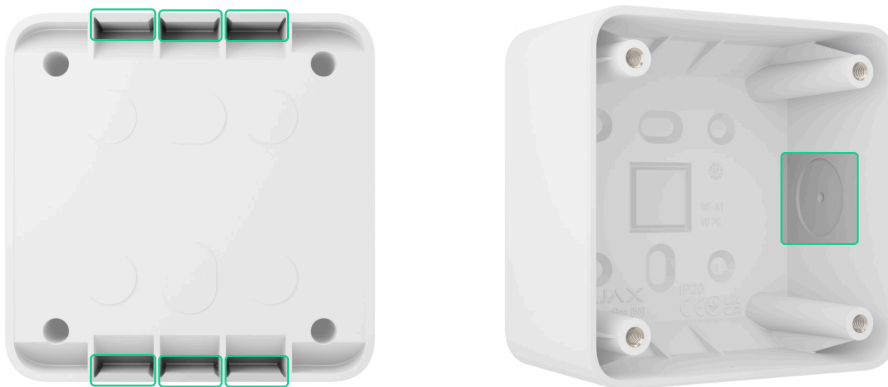
Cable routing

SurfaceBox [55] allows routing wires inside from the back, side, top, or bottom.

To route the cable from the back, you can use the central, top, or bottom holes highlighted in the picture.



To route the cable from the side, top, or bottom, you can break out any of the six sections at the device's top or bottom or use the side recess highlighted in the picture. Use pliers to break out a section of the device enclosure or drill the hole in the highlighted areas, considering the size of the pipe, corrugated pipe, conduit, or cables.



The top, bottom, and both sides of SurfaceBox [55] are similar and symmetrical. Therefore, you can rotate it 90° or 180° for convenient cable routing and mounting on the surface.

Preparing cables for connection

Remove the insulating layer and strip the cable with a special insulation stripper. The ends of the wires inserted into the device terminals must be tinned or crimped with a sleeve. This ensures a reliable connection and protects the conductor from oxidation.

Refer to the user manual of the device that will be installed in SurfaceBox [55] to check specific cable preparation requirements. Follow these requirements to ensure the device's stable operation.

Installation

Before installing, ensure that you have selected the optimal location for SurfaceBox [55] and that it complies with the requirements of this manual.

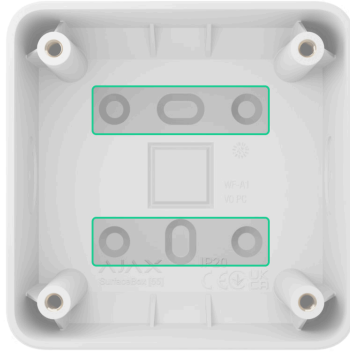


When installing and operating a LightSwitch or Outlet device in SurfaceBox [55], follow the general electrical safety rules for using electrical appliances, as well as the requirements of electrical safety regulations.

Only a qualified electrician or installer should perform the installation. Do not apply power to the device until all components are securely installed.

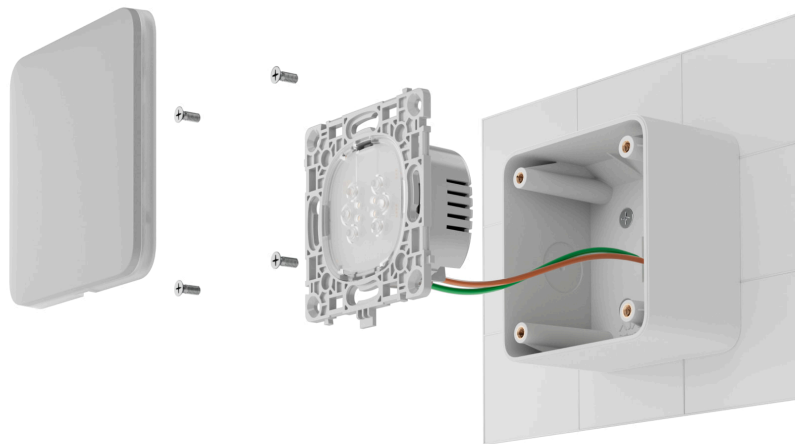
Installing SurfaceBox [55]

1. De-energize the power cable you will connect to the device installed in SurfaceBox [55].
2. Prepare the hole for routing the cable in the mounting box in advance. Refer to the [Cable routing](#) section to see all options.
3. Insert the pipe or corrugated pipe into the prepared hole in the mounting box if necessary.
4. Run the cable into the mounting box through the hole that was made.
5. Secure SurfaceBox [55] on the surface at the selected installation site using the appropriate fasteners through corresponding fixing points.



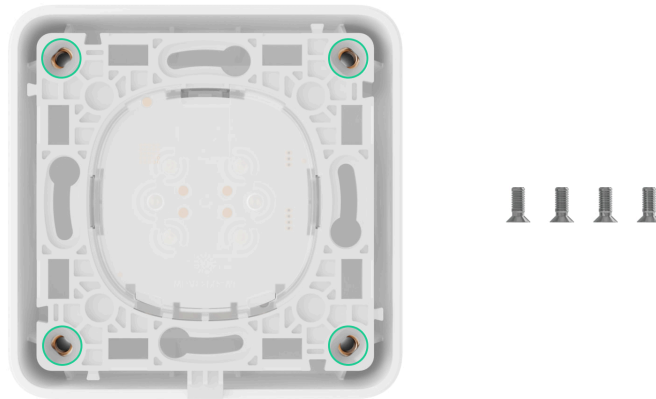
The installation kit does not include fasteners for fixing SurfaceBox [55] to a surface. Depending on the surface type, use the appropriate fasteners.

Installing the device in SurfaceBox [55]



1. De-energize the power cable that you will connect to the device installed in SurfaceBox [55] if you have not done so already.
2. Prepare wires for connection to a LightSwitch or Outlet device according to its requirements. Refer to the user manual of the device that will be installed in SurfaceBox [55].
3. Connect the wires to a LightSwitch or Outlet device according to the diagram specified for the device. Refer to the user manual of the device that will be installed in SurfaceBox [55].

4. Install a LightSwitch or Outlet device in the SurfaceBox [55] and secure it with bundled screws.



Use only bundled screws with **metric** thread to install a LightSwitch or Outlet device in SurfaceBox [55]. Screws with inch thread are not compatible and may damage the thread in SurfaceBox [55] fixing points.

5. Finish the installation of a LightSwitch or Outlet device according to the steps in the user manual for the corresponding device.
6. Switch on the power.



User manuals for LightSwitch or Outlet devices can be found on the [Ajax Support](#) page.

Maintenance

The device does not require maintenance.

Technical specifications

[All technical specifications](#)

Compliance with standards

Warranty

The warranty for the products of the “Ajax Systems Manufacturing” Limited Liability Company is valid for 2 years after purchase.

If the device does not operate properly, we recommend contacting support service first, as most technical issues can be resolved remotely.

Warranty obligations

User Agreement

Contact Technical Support:

- email
- Telegram

Manufactured by “AS Manufacturing” LLC

Subscribe to the newsletter about safe life. No spam

Email

Subscribe