

COPYRIGHT © Hangzhou EZVIZ Software Co., Ltd. ALL RIGHTS RESERVED.

Any and all information, including, among others, wordings, pictures, graphs are the properties of Hangzhou EZVIZ Software Co., Ltd. (hereinafter referred to as “EZVIZ”). This user manual (hereinafter referred to as “the Manual”) cannot be reproduced, changed, translated, or distributed, partially or wholly, by any means, without the prior written permission of EZVIZ. Unless otherwise stipulated, EZVIZ does not make any warranties, guarantees or representations, express or implied, regarding to the Manual.


About this Manual

The Manual includes instructions for using and managing the product. Pictures, charts, images and all other information hereinafter are for description and explanation only. The information contained in the Manual is subject to change, without notice, due to firmware updates or other reasons. Please find the latest version in the EZVIZ™ website (<http://www.ezviz.com>).

Revision Record

New release – December 2024

Trademarks Acknowledgement

EZVIZ™, ™, and other EZVIZ's trademarks and logos are the properties of EZVIZ in various jurisdictions. Other trademarks and logos mentioned below are the properties of their respective owners.

Legal Disclaimer

TO THE MAXIMUM EXTENT PERMITTED BY APPLICABLE LAW, THE PRODUCT DESCRIBED, WITH ITS HARDWARE, SOFTWARE AND FIRMWARE, IS PROVIDED “AS IS”, WITH ALL FAULTS AND ERRORS, AND EZVIZ MAKES NO WARRANTIES, EXPRESS OR IMPLIED, INCLUDING WITHOUT LIMITATION, MERCHANTABILITY, SATISFACTORY QUALITY, FITNESS FOR A PARTICULAR PURPOSE, AND NON-INFRINGEMENT OF THIRD PARTY. IN NO EVENT WILL EZVIZ, ITS DIRECTORS, OFFICERS, EMPLOYEES, OR AGENTS BE LIABLE TO YOU FOR ANY SPECIAL, CONSEQUENTIAL, INCIDENTAL, OR INDIRECT DAMAGES, INCLUDING, AMONG OTHERS, DAMAGES FOR LOSS OF BUSINESS PROFITS, BUSINESS INTERRUPTION, OR LOSS OF DATA OR DOCUMENTATION, IN CONNECTION WITH THE USE OF THIS PRODUCT, EVEN IF EZVIZ HAS BEEN ADVISED OF THE POSSIBILITY OF SUCH DAMAGES.

TO THE MAXIMUM EXTENT PERMITTED BY APPLICABLE LAW, IN NO EVENT SHALL EZVIZ'S TOTAL LIABILITY FOR ALL DAMAGES EXCEED THE ORIGINAL PURCHASE PRICE OF THE PRODUCT.

EZVIZ DOES NOT UNDERTAKE ANY LIABILITY FOR PERSONAL INJURY OR PROPERTY DAMAGE AS THE RESULT OF PRODUCT INTERRUPTION OR SERVICE TERMINATION CAUSED BY: A) IMPROPER INSTALLATION OR USAGE OTHER THAN AS REQUESTED; B) THE PROTECTION OF NATIONAL OR PUBLIC INTERESTS; C) FORCE MAJEURE; D) YOURSELF OR THE THIRD PARTY, INCLUDING WITHOUT LIMITATION, USING ANY THIRD PARTY'S PRODUCTS, SOFTWARE, APPLICATIONS, AND AMONG OTHERS.

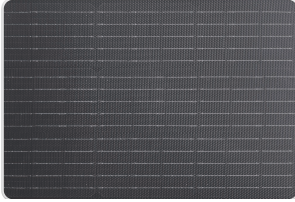
REGARDING TO THE PRODUCT WITH INTERNET ACCESS, THE USE OF PRODUCT SHALL BE WHOLLY AT YOUR OWN RISKS. EZVIZ SHALL NOT TAKE ANY RESPONSIBILITIES FOR ABNORMAL OPERATION, PRIVACY LEAKAGE OR OTHER DAMAGES RESULTING FROM CYBER ATTACK, HACKER ATTACK, VIRUS INSPECTION, OR OTHER INTERNET SECURITY RISKS; HOWEVER, EZVIZ WILL PROVIDE TIMELY TECHNICAL SUPPORT IF REQUIRED. SURVEILLANCE LAWS AND DATA PROTECTION LAWS VARY BY JURISDICTION. PLEASE CHECK ALL RELEVANT LAWS IN YOUR JURISDICTION BEFORE USING THIS PRODUCT IN ORDER TO ENSURE THAT YOUR USE CONFORMS TO THE APPLICABLE LAW. EZVIZ SHALL NOT BE LIABLE IN THE EVENT THAT THIS PRODUCT IS USED WITH ILLEGITIMATE PURPOSES.

IN THE EVENT OF ANY CONFLICTS BETWEEN THE ABOVE AND THE APPLICABLE LAW, THE LATTER PREVAILS.

Table of Contents

| | |
|--|----------|
| Box Content | 1 |
| Basics | 1 |
| 1. Power on the Device | 2 |
| 2. Fully Charge the Device | 2 |
| Installation | 3 |
| 1. Mount the Device to the Bracket | 3 |
| 2. Install the Bracket | 3 |
| 3. Connect it to Your Battery Camera | 4 |
| 4. Bind the Device to Your Battery Camera..... | 5 |
| Appendix | 6 |
| 1. Rechargeable Lithium ion Battery | 6 |
| 2. INFORMATION FOR PRIVATE HOUSEHOLDS | 6 |

Box Content



Device (x1)



Drill Template (x1)



Screw Kit (x1)



Regulatory Information (x2)



Adjustable Mounting Bracket (x1)



Power Cable (x2)



Type-C to Micro USB Transformer (x2)



Quick Start Guide (x1)



Hex Socket Head Cap Screw
M8X20 (x1)

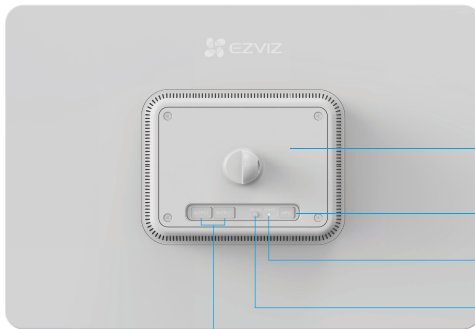


L-shaped Wrench (x1)








Hoop (x2)

Basics

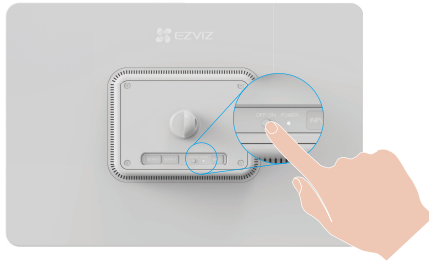


- Battery (Built-in)
- Type-C Input Port
- POWER Indicator
- OFF/ ON Button
- USB-A Output Port(x2)

| Name | Description |
|-----------------|---|
| OFF/ON Button | <ul style="list-style-type: none"> • Power on: Press and hold the button for 2s in the shutdown state. • Power off: Press and hold the button for 4s to power off. • Reset: Press the button 3 times in 1s to restart and set all parameters to default. |
| POWER Indicator |  Slow-flashing Green: Charging. |
| |  Solid Green: Fully charged. |
| |  Slow-flashing Blue: Working properly. |
| |  Fast-flashing Red: Device exception. |
| |  Solid Red: Battery low. |

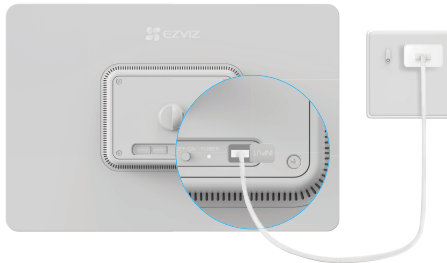
1. Power on the Device

1. In the shutdown state, press and hold the OFF/ON button for 2s to power on.



2. Fully Charge the Device

If the device is out of battery, connect the device to power outlet with a power adapter for charging (5V 2A)



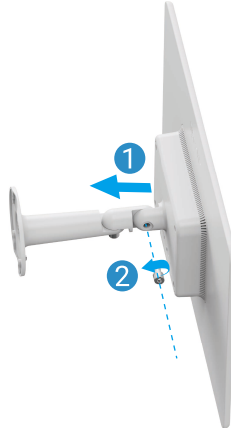
- It is recommended to fully charge the device for the first time use.
- The power adapter (5V 2A) needs to be purchased separately.
- Please do not charge the device when the temperature exceeds 45 degrees or below 0 degrees.
- It is not allowed to charge the device with power adapter outdoors.
- When charging, the device will be automatically turned on.

Installation

i CAUTION: As an alternative charging equipment, the power amount generated by this device may be affected by its actual surrounding environment, mainly the intensity of sunlight and the time length of illumination. If the battery camera is running out of power soon, please bear it in mind that this device alone cannot ensure the camera remains in working status.

1. Mount the Device to the Bracket

1. Mount the device to the bracket.
2. Tighten the fixing screw as shown in the figure below.

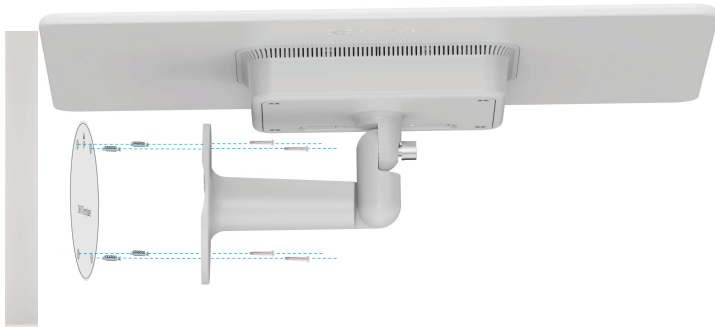


2. Install the Bracket

i You can install the device on the wall or pole.

Option 1: Wall Mounting

1. Place drill template onto a clean and flat surface.
2. (For the cement wall/ceiling only) Drill screw holes according to the template, and insert anchors.
3. Use screws to fix the bracket.



1 When drilling holes for expansion bolts, please make sure that the diameter of the drill head is 7mm, and that the hole depth is not less than 35mm.

Option 2: Pole Mounting

1. Use the hoop (included in the package) to fix the mounting bracket to a pole.

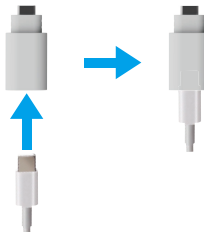


3. Connect it to Your Battery Camera

Connect it with EZVIZ battery camera to charge your battery camera.



- 1 • It is recommended to use the power cable included in the package.
- It is recommended that the power port of the battery camera is a type-C port, If not, use with the type-C to micro USB transformer (included in the package).



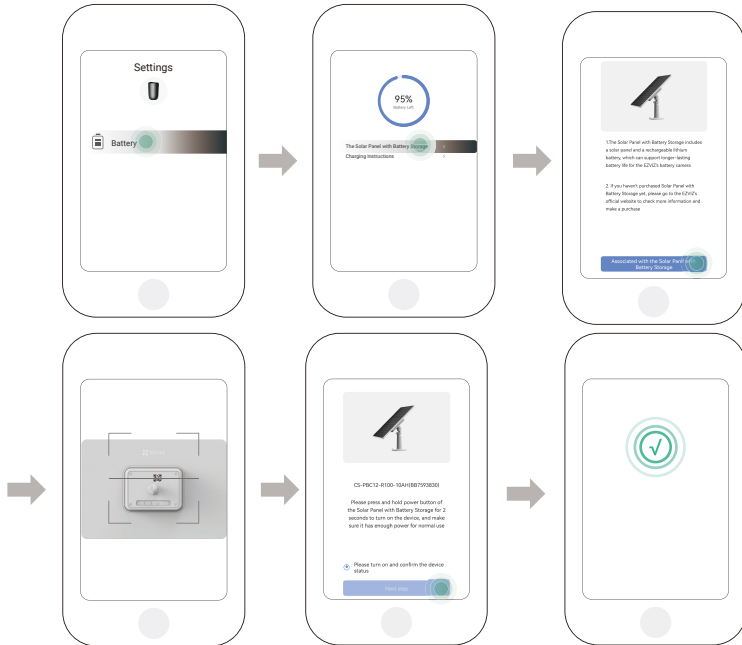
- i • In accordance with safety and regulatory requirements, the working environment temperature range for battery camera charging should be maintained at 0-45°C.

• Please clean the dust and dirt on the surface of the device in time to avoid affecting the power generation efficiency of it.

4. Bind the Device to Your Battery Camera

- Please visit www.ezviz.com/eu or consult the customer service for the battery camera models suitable for this product.
- After binding the device to your battery camera, you can see the connection status and the battery capacity of the device on the EZVIZ app.

1. Go to the preview page of the battery camera, and tap “Settings -> Battery-> The Solar Panel with Battery Storage” to the Solar Panel with Battery Storage interface.
2. Press “Associated with the Solar Panel with Battery Storage” button and scan the QR code of the solar panel.
3. Tap “Next step” to finish binding.



For other detailed information, please visit www.ezviz.com/eu.

Appendix

1. Rechargeable Lithium ion Battery

1. The battery type of the device: Portable battery.
2. The battery of this device is non-removable, which is risky to remove.

| Component Parts | Hazardous Ingredients (Chemical Name) | CAS No. | Concentration Ranges | Chemical Formula |
|-----------------|---|-------------|----------------------|---|
| Anode | Lithium Manganese Nickel and Cobalt Oxide | 346417-97-8 | 36.3% | $\text{LiNi}_x\text{Co}_y\text{Mn}_{1-x-y}\text{O}_2$ |
| | Polyvinylidene Fluoride(PVDF) | 24937-79-9 | 0.48% | $(\text{C}_2\text{H}_2\text{F}_2)_n$ |
| Cathode | Graphite | 7782-42-5 | 19.38% | C |
| | Styrene-Butadiene Rubber(SBR) | 9003-55-8 | 0.27% | $\text{C}_{12}\text{H}_{14}$ |
| | sodium carboxymethyl cellulose | 9004-32-4 | 0.22% | $\text{C}_5\text{H}_7\text{O}_2(\text{OH})_2\text{OCH}_2\text{COONa}_n$ |
| | Nickel | 7440-02-0 | 0.33% | Ni |
| AL-foil | Aluminium | 7429-90-5 | 2.68% | Al |
| Cu-foil | Copper | 7440-50-8 | 6.66% | Cu |
| Electrolyte | Lithium Hexafluorophosphate | 21324-40-3 | 1.79% | LiPF_6 |
| | Ethylene Carbonate(EC) | 96-49-1 | 2.8% | $\text{C}_2\text{H}_4\text{O}_3$ |
| Separator | Polyethylene(PE) | 9002-88-4 | 2% | $(\text{C}_2\text{H}_4)_n$ |
| PET film | Polyethylene terephthalate(PET) | 25038-59-9 | 0.9% | $\text{C}_{10}\text{H}_8\text{O}_6$ |
| cell case | Fe | 7439-89-6 | 17% | Fe |
| others | others | / | 9.19% | / |

2. INFORMATION FOR PRIVATE HOUSEHOLDS

1. Separate collection of waste equipment: Electrical and electronic equipment that has become waste is referred to as waste equipment. Owners of waste equipment must dispose of it separately from unsorted municipal waste. In particular, waste equipment does not belong in household waste, but in special collection and return systems.
2. Batteries and rechargeable batteries as well as lamps: Owners of waste equipment shall, as a rule, separate waste batteries and rechargeable batteries that are not enclosed in the waste equipment, which can be removed from the waste equipment without being destroyed, from the waste equipment before handing them in at a collection point. This does not apply if waste equipment is prepared for reuse with the participation of a public waste management authority.
3. Options for returning waste equipment: Owners of waste equipment from private households can return it free of charge to the collection points of the public waste management authorities or to the take-back points set up by manufacturers or distributors within the meaning of the Electrical and Electronics Equipment Law. Stores with a sales area of at least 400 m² for electrical and electronic equipment and those grocery stores with a total sales area of at least 800 m² that offer electrical and electronic equipment several times a year or on a permanent basis and make it available in the market are required to take it back. This also applies in the case of distribution using means of distance communication, if the storage and shipping areas for electrical and electronic equipment are at least 400 m² or the total storage and shipping areas are at least 800 m². Distributors shall, in principle, ensure take-back by providing suitable return facilities at a reasonable distance from the respective end user. The possibility of returning waste equipment free of charge exists for distributors who are obliged to take it back, among other things, if a new similar device that essentially fulfills the same functions is delivered to an end user.
4. Privacy Notice: Waste equipment often contains sensitive personal data. This applies in particular to devices of information and telecommunications technology such as computers and smartphones. In your own interest, please note that each end user is responsible for deleting the data on the waste equipment to be disposed of.
5. Meaning of the symbol "crossed-out wheelie bin": The symbol of a crossed-out wheelie bin regularly depicted on electrical and electronic equipment indicates that the respective device is to be collected separately from unsorted municipal waste at the end of its service life.