



POINTSOURCE™ WIRELESS

Quickstart **GUIDE**

POINTSOURCE WIRELESS

VAD-PSW

POINTSOURCE™ WIRELESS



PACKAGE CONTENTS

- 1 x POINTSOURCE Wireless UNIT
- 1 x POINTSOURCE Wireless KIT Battery Module (inc Battery)
- 1 x Universal Charger (UK, US, EU Plugs)
- 1 x POINTSOURCE Wireless Strap
- 1 x Quickstart Guide
- 1 x Important Battery Module instructions



IMPORTANT SAFETY NOTICES

- POINTSOURCE Battery Module must **NOT** be short-circuited.
- To maximise camera installation performance, this product has been designed to have a high-energy capacity battery, and it is therefore important to follow the charging guidelines detailed on Page 5.
- Only use the supplied charger module for charging the battery. The product warranty will be void if an incorrect charger product is used.
- Do **NOT** attempt to open the battery module. Any attempt to open the Battery Modules invalidates the warranty.

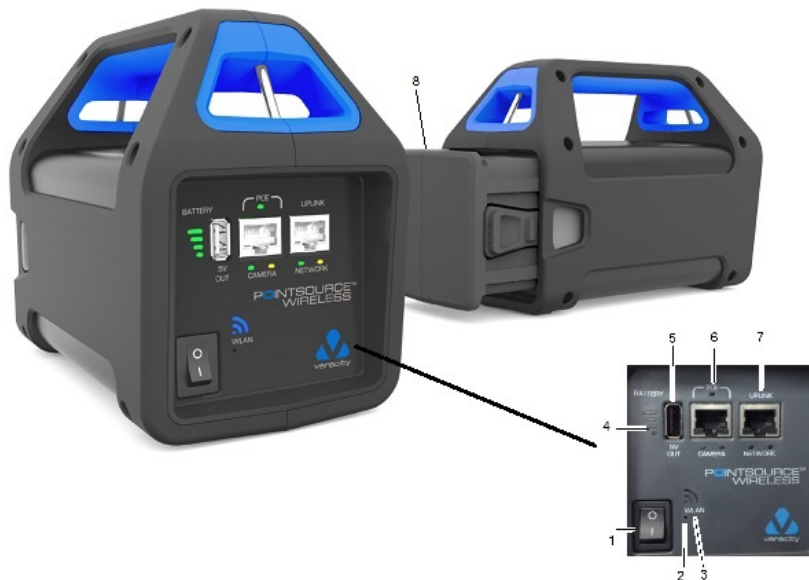
MAINTAINING BATTERY PERFORMANCE

For optimal battery performance and longevity, POINTSOURCE Wireless should be fully charged:

- | Before first use
- | After long periods of storage
- | Before being stored for long periods
- | Every six months during storage.

Always switch off POINTSOURCE Wireless when it is not in use, even if the unit is fully discharged.

HARDWARE



1. On-Off switch
2. Factory Reset button
3. Wireless indicator
4. Battery Status Indicator
5. USB Charging Port
6. RJ45 POE Port:
 - | POE LED ON – Enabled
 - | POE LED Flashing – Error
 - | POE LED OFF – No POE
7. RJ45 Network Port
8. Battery Module (includes charging port)

CHARGING

The following process **MUST** be followed for safe charging of the POINTSOURCE Battery Module:

- | Place the Battery Module on a flat surface in a well-ventilated area with the charger socket facing upward.



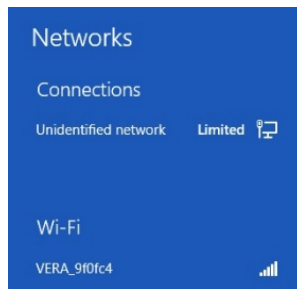
- | Plug the charger into the wall socket and power it on **prior to plugging the charger into the Battery Module.**
 - o The Charger LED will illuminate **Green.**
 - o If this is not the case, then stop the charging process and refer to the manufacturer.
- | Plug the charger into the Battery Module.
- | The Charger LED will be in one of the following states:
 - o **Red** - The battery is charging.
 - o **Red/Green** flash - Battery near full charge
 - o **Green** - Fully charged. Note: The charge level can be checked by placing the battery module into the POINTSOURCE product and checking the battery level Indicator on the fascia. All battery level indicator LEDs should be illuminated for a fully charged battery.
- | The charger may be left connected once charging has been completed. However, for best performance, disconnection within 12 -16 hours is recommended.

OPERATION

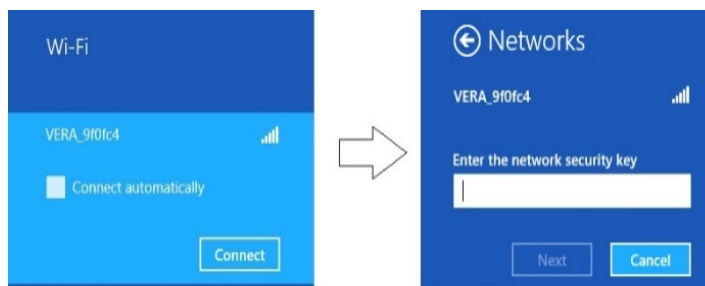
1. With the Battery Module fully inserted into the POINTSOURCE Wireless, power the unit on using the On-Off switch (1) on the front panel. The Battery Status indicator (4) will indicate what percentage of the charge remains on the battery. After around 15 seconds, the blue Wireless indicator will start flashing and will change to solid blue around 80 seconds after the initial switch on.
2. Connect the POE Camera to be configured into the POE port (6). The RED POE LED should illuminate, indicating there is a POE connection to the camera.
3. Connect to the POINTSOURCE Wireless. There are two possible ways to connect to the POINTSOURCE Wireless

3.1 WIRELESS CONNECTION

Power on your 2.4 GHZ enabled device and view the available wireless network connections where you should see the SSID of the unit you wish to connect to. The following shows an example of connecting to a laptop, but a smartphone or PC can also be used.



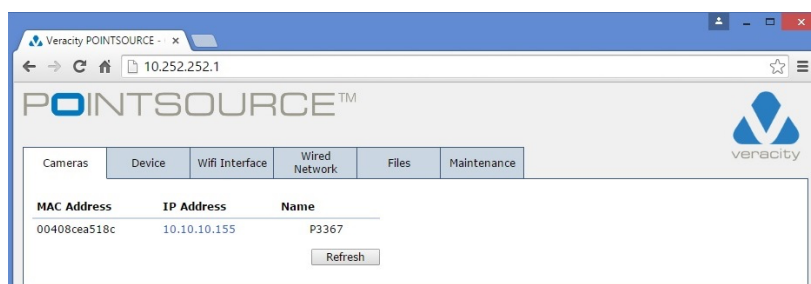
Click on the unit in the Wi-Fi list, which will prompt for a password. The password is marked on the label on the base of the unit.



The POINTSOURCE WIRELESS is now connected to the browsing-capable device.

The following shows how to connect to the POINTSOURCE Wireless using a Web browser. Alternatively, it is possible to connect to the POINTSOURCE Wireless using CAMPOINT, a free app developed to assist with CCTV IP-camera installation. CAMPOINT is available for iOS (iPhone and iPad) via the App Store and Android handheld devices via the Google Play Store.

In a web browser, enter the IP address of the POINTSOURCE Wireless. This address is fixed and is marked on the label on the base of the unit. When entered into the Browser, the following cameras tab will come up, which shows a list of available cameras to contact with.

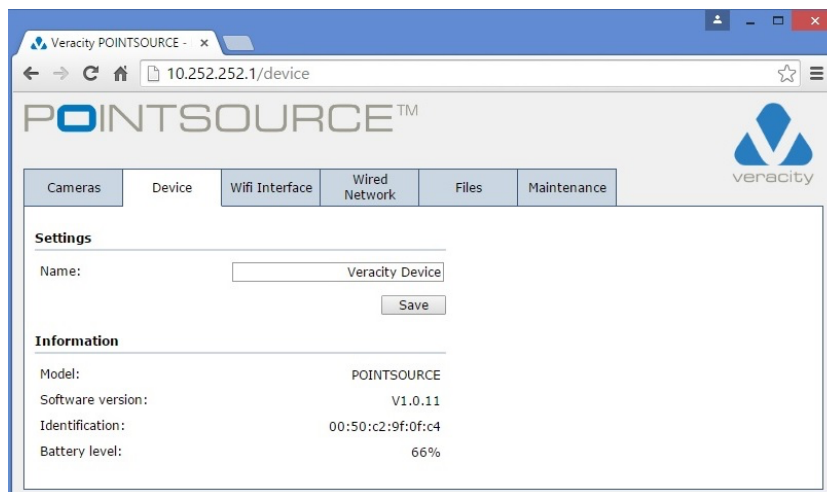




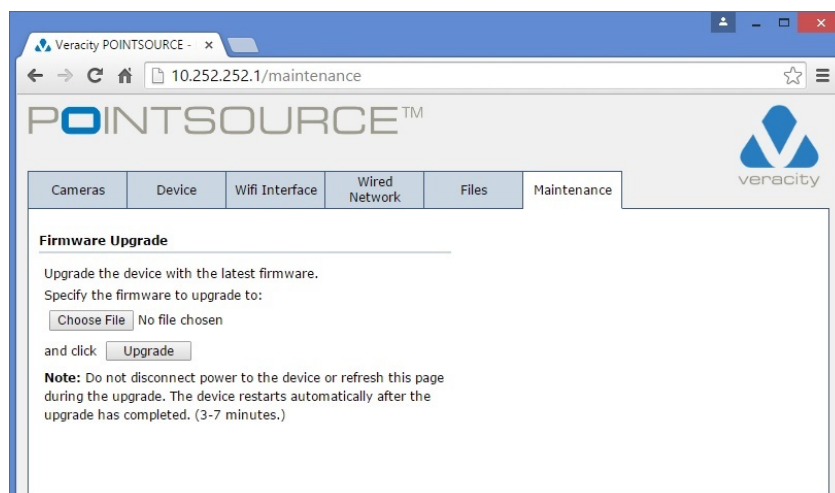
By selecting the camera's IP address, the live picture should appear on the screen and will allow the camera to be configured directly from the browser-enabled device.

4 Configuration of the POINTSOURCE WIRELESS

There are a number of settings that can be configured on the actual POINTSOURCE Wireless tool. To view the details of the POINTSOURCE Wireless, select the Device tab. This will indicate the software version that is running on the POINTSOURCE Wireless and also shows the Battery level, which is also indicated on the Battery Status Indicator (4)

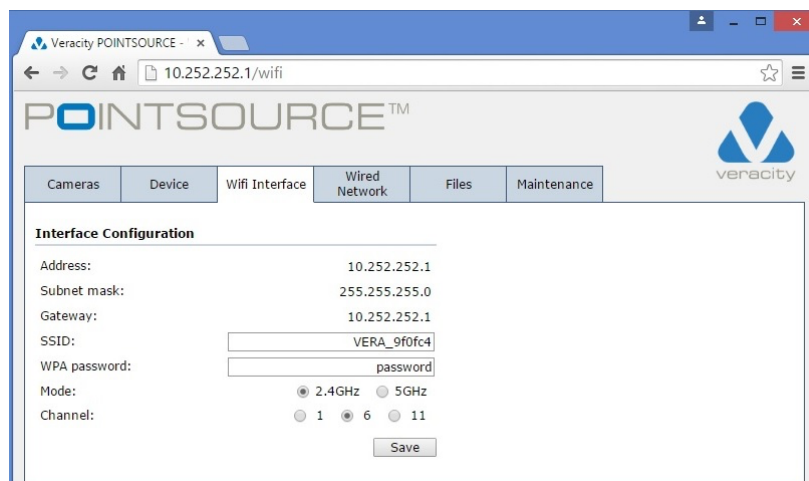


The Maintenance page can be used if the software needs upgraded at any time. To carry out an upgrade the file should be placed in a known location on your Laptop/PC. Browse to this location using the Choose File option and then select Upgrade to download and upgrade the unit. This will take up to 7 minutes to complete.



The Wi-Fi Interface page can be used to select a variety of the Wireless settings including SSID, the Wireless Password and Wireless band as the POINTSOURCE Wireless is a dual band device that can operate at 2.4 GHz or 5 GHz.

Note that at any time if you wish to default to the settings that the unit shipped with, the Factory Reset button (2) can be used.



SPARE PARTS

Replacement Battery Modules and Battery Chargers are both available. The part numbers are as follows:

VAD-CHGR POINTSOURCE Charger
VAD-PS-BM POINTSOURCE Battery Module