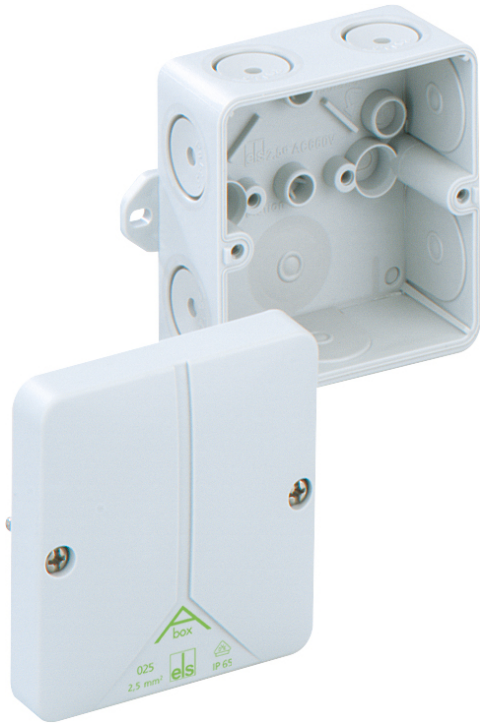


Junction box

# Abox 025 AB-L



## Abox 025 AB-L

### Junction box

**CUSTOMIZABLE**

Productnumber: 80390701  
Dimensions: 80 x 80 x 52 mm

Junction box acc. to DIN EN 60670 (VDE 0606),  
Ui=690V, with self-sealing, soft inlet membranes,  
M20, seal range 2 - 16 mm, with external fixing  
lugs

### Grey, without terminal



To industrial product:  
<https://www.spelsberg.com/p/49490201>

## Technical Data

### electrical characteristics

Protection type UL:	not specified
Rated insulation voltage AC:	690 V
Type of protection:	IP65
Circuit integrity class:	none
Max. conductor cross section:	2,5 mm <sup>2</sup>
Protection class:	II

### Colours

Cover colour:	grey
---------------	------

### Dimensions

Length:	80 mm
Width:	80 mm

### Dimensions

Height:	52 mm
---------	-------

### Material characteristics

suitable for exterior use:	no
Burning behaviour in accordance with UL 94:	HB
Burning behaviour in accordance with VDE:	650
Halogen free:	yes
Industry quality:	no

### mechanical properties

Type of fastening:	Wall/ceiling mounting
Sealable:	yes
Cover screw torque:	1 Nm
Impact strength:	IK07

## Ambient conditions

max. relative humidity 25°C:	95 %
max. relative humidity 40°C:	50 %
Min. ambient temperature:	-25
Max. ambient temperature:	40
24h ambient temperature:	35

## Material

Base unit material:	Polystyrene
Cover material:	Polystyrene
Cover screw material:	Stainless steel V2A

## Certificates

Test mark:	VDE
------------	-----

## Accessories

---

KS M20 - Combi set

---

WST M20 - Twist plug

---

GMU PA M20 - Lock nut

---

WNI M20 - Twist nipple

---

SNI M20 - Stepped nipple

---

KVR M20-GDB/MGM/sw - Cable gland

---

KVR M20-MGM - Cable gland

---

KVR M20-GDB/MGM - Cable gland

---

AST M20 - Attachment bushes

---

VST M20 - Sealing plugs

---

KVR M20-GDB - Cable gland

---

DMS M20/sw - Double-membrane seals

---

DMS M20/w - M20, white

---

DMS M20 - Double-membrane seals

---

BST M20/sw - Ventilation seal

---

BST M20 - Ventilation seal

---

RST M20 - Conduit connector

---

Abox 025/040 KLS-2,5<sup>2</sup>/4<sup>2</sup> - Terminal block

---