

# Slim Wireless Magnetic Contact

Partcode: MCNANO-WE

EN50131-2-6:2008  
EN50131-5-3:2017  
PD6662:2017

Document SAP: 102025482-01  
Security Grade (SG) 2  
Environmental Class (EC) II



## EN

### 1. Dimensions and weight

#### 2. Opening/closing the casing and affixing the device

The device can be mounted on typical building materials such as wood, PVC, brick or metal etc. It is important that two screws are used on the larger housing containing the main PCB in order for the tamper protection to function as designed. If you encounter any problems with different surfaces, please contact [customer.support@pyronix.com](mailto:customer.support@pyronix.com)

#### 3. The Printed Circuit Board (PCB)

- |                  |                     |
|------------------|---------------------|
| A. Tamper switch | D. LEDs             |
| B. Learn button  | E. Battery contacts |
| C. Reed switch   |                     |

#### 4. Learning procedure

i. Prepare the system for pairing with the device.

- Please refer to control panel instructions.

ii. Remove the piece of polyester film that is separating the battery from the battery contacts.

iii. Press and hold the 'learn button' on the device for at least 5 seconds and then release.

- The three LEDs will cycle through on the device whilst the button is held.

iv. On releasing the learn button, the device attempts to pair with the system and will indicate via the LEDs whether it has been successful or failed.

- The green LED will illuminate to indicate the device has successfully paired with the system and has adequate signal.

- If the device fails to pair with the system, the red LED will illuminate.

#### 5. Testing the device

Once learnt to the system, the device will be in a 'magnet positioning mode' for 10 minutes, after which the green and red LEDs will extinguish and be disabled. This 10 minute timer can be initiated again by releasing the tamper switch or performing wireless diagnostics on the device. Whilst in test mode, if the device detects the magnet, the green LED will illuminate. If the device does not detect the magnet, the red LED will be illuminated.

After the 'magnet positioning mode', the blue LED will light up for 1 hour when the device is triggered and will extinguish after this period.

#### 6. Using the adhesive strip

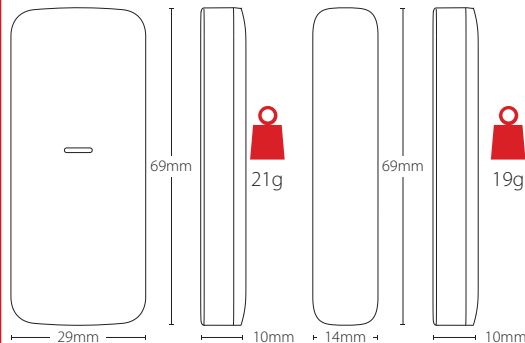
If using the adhesive strip to affix the device, the tamper in the main device and the magnet must be screwed securely if the device is to remain grade 2 compliant.

#### Programming the device

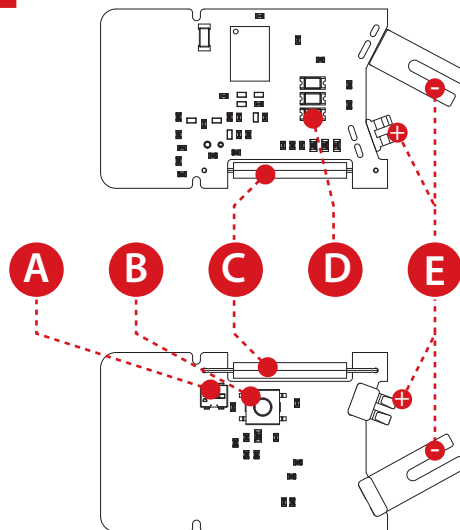
Once learnt to the system, the zone needs to be programmed so that the system reacts as intended when the device is triggered.

Please note: Refer to the installation or programming guides provided with the control panel for advice.

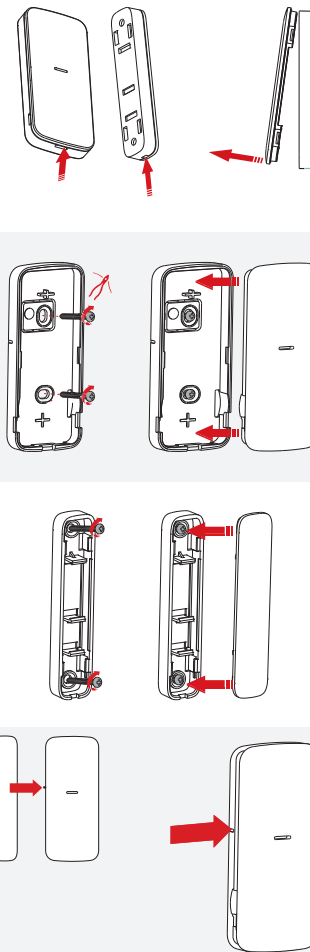
1



3



2



## Specifications

### Casing & colour

White 2mm polycarbonate-ABS

### LED colours

Red, blue and green

### Transmission frequency

868MHz FM transceiver narrow band

### Transmission method and range

Fully encrypted rolling code, 300m

### Tamper switches

Front and rear

### Temperature

Storage: -20°C to 50°C

Nominal: -10°C to 50°C

Certified: -10°C to 40°C

### Dimensions (W x H x D)

Device: 29 x 69 x 10mm, 21g

Magnet: 14 x 69 x 10mm, 19g

### Battery

1 x lithium CR2450R, 3V/500mAh with a 50mA pulse

(Ø x H) 24.5 x 5mm

Low voltage threshold 2.2V +/- 5%

Battery life up to 2 years

**Please note:** To achieve optimum battery life, locate in environments that are typically room temperature and adhere to installation advice.

### Installation advice

Please scan the QR code to the right for installation tips.

### Magnet Performance



[www.pyronix.com/installation-advice/](http://www.pyronix.com/installation-advice/)

Axes of Operation	Event	Without Nominal Distance		With Nominal Distance (5mm)	
		Distance in Air	Distance on Iron	Distance in Air	Distance on Iron
Z+	Remove	53mm	36mm	50mm	30mm
	Approach	45mm	26mm	43mm	25mm
Z-	Remove	50mm	33mm	47mm	26mm
	Approach	40mm	22mm	36mm	24mm
Y	Remove	40mm	10mm	35mm	9mm
	Approach	34mm	8mm	28mm	7mm
X+	Remove	24mm	22mm	25mm	19mm
	Approach	22mm	20mm	23mm	13mm
X-	Remove	10mm	8mm	12mm	7mm
	Approach	9mm	7mm	10mm	4mm

### Battery information

When disposing of the product, the battery must be removed and disposed of separately in accordance with the local regulations.

### Product information

For electrical products sold within the European Community. At the end of the electrical products life, it should not be disposed of with household waste. Please recycle where facilities exist. Check with your Local Authority or retailer for recycling advice in your country. This product is approved for use in the Residential, Commercial and Light Industrial Environments.

### Warranty & compliance

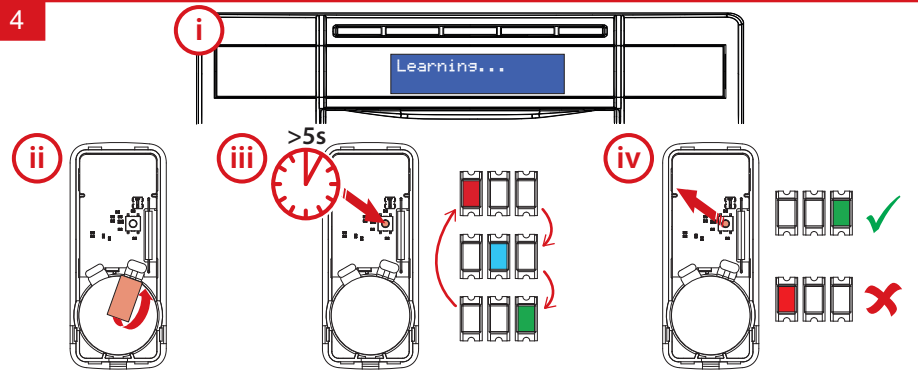
This product is sold subject to our EXTENDED WIRELESS DEVICES warranty conditions and is warranted against defects in workmanship for a period of five years (battery excluded). The 5 year EXTENDED WIRELESS DEVICES warranty is only applicable when the device has been continually powered using a Pyronix branded battery, and when returned with the Pyronix branded battery that has been used in the device. **For any products returned without a Pyronix battery, or with another battery, the standard 2 year warranty applies.**

Pyronix batteries are available to purchase from our authorised distributors. For further warranty information visit: <https://www.pyronix.com/terms-conditions-sales/>

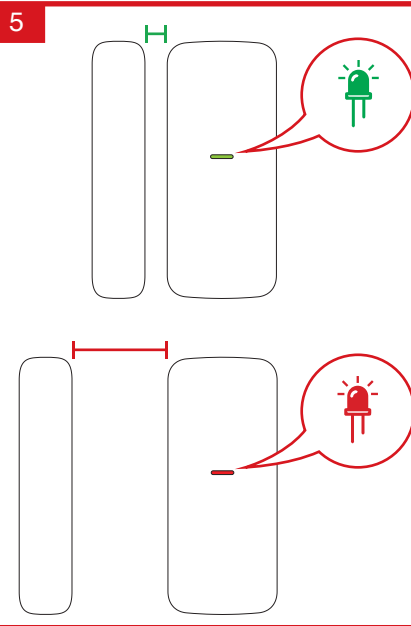
The declaration of conformity and further compliance documentation may be consulted at:

[www.pyronix.com/product-compliance.php](http://www.pyronix.com/product-compliance.php)

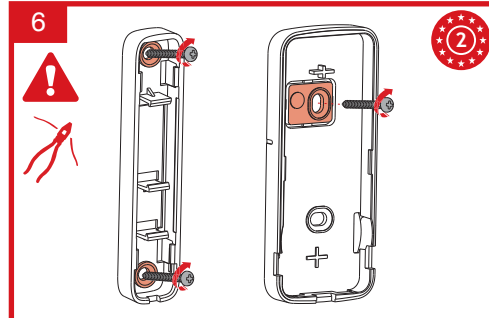
4



5



6



[www.pyronix.com/portal](http://www.pyronix.com/portal)

