



Features & Benefits

- Suitable for Gigabit Ethernet applications
- Shallow design requires minimal back-box depth
- Interchangeable with other Euro modules and 1/4 blanks
- Industry standard IDCs
- Individually QA tested
- Also, available as PABX Secondary or Full Master Voice Module

Specifications

Width	25 mm
Depth	22 mm
Height	50 mm
Back-box Depth	Minimum 15 mm recommended
Material	Polycarbonate/ABS thermoplastic resin, with grade UL94 V0 at 1.5 mm flame retardancy
Finish	High gloss
IDC Labels	Individual colour coded labels to T568B
IDC Blocks	4-way industry standard IDC blocks
Conforms to	ANSI/TIA-568-C Enhanced Category 5 Specification

Ordering Information

Product Description	Part Number
Cat 5e Compact UTP Euro Module	008-000-000-20

The Connectix Enhanced Category 5 Compact Module is designed to provide one of the shallowest wall outlets on the market. They are the ideal solution wherever back-box depth is a problem.

The attractive high gloss finish and easy to use labelling system are identical to all other Connectix Cabling Systems Modules, making them interchangeable in most applications.

Enhanced Category 5 Compact Modules can be fitted into single or dual gang faceplates and can be combined with quarter blanks and/or voice modules to provide the required configuration.

The modules offer extended PowerSum characteristics and exceed the ANSI/TIA-568-C specifications. When combined with Connectix Enhanced Category 5 Patch Panels and UTP Cable the link will perform well more than the Enhanced Category 5 Specification.





Features & Benefits

- Shallow design requires minimal back-box depth
- Industry standard LJ6C size
- Industry standard IDCs
- Individually QA tested

Specifications

Width	25 mm
Depth	19.5 mm
Height	38.5 mm
Back-box Depth	Minimum 20 mm with panel 15 mm with faceplate
Mounting Hole	Size 22.3 mm x 36.7 mm
Panel Thickness	2.0 mm Max
Material	Polycarbonate/ABS thermoplastic resin with grade UL94 VO at 1.5 mm flame retardancy
Finish	High gloss
IDC Labels	Individual colour code
IDC Blocks	4-way industry standard IDC blocks
Conforms to	ANSI/TIA-568-C Enhanced Category 5 Specification

Ordering Information

Product Description	Part Number
Cat 5e LJ6C Compact Module	008-000-000-10
Single LJ6C Single Gang Faceplate	008-009-001-00
Dual LJ6C Single Gang Faceplate	008-009-002-00
Quad LJ6C Dual Gang Faceplate	008-009-004-00
Quad Panel for Ackerman Floor Box	008-011-001-06
LJ6C Blank	008-001-004-07

The Connectix Enhanced Category 5 LJ6C Compact Module is designed to provide one of the shallowest outlets on the market. They are the ideal solution wherever back box depth is a problem.

LJ6C Modules are ideal for use in floor boxes, or any application that has an industry standard LJ6C aperture. Single and dual gang faceplates are available for up to four LJ6C modules in addition to panels suitable for Ackerman Floor boxes. Their attractive high gloss finish and easy to use labelling system makes them popular with both installers and users alike.

Installation is made easy with individual colour codes and the use of industry standard IDCs.

Connectix Enhanced Category 5 LJ6C Modules offer extended PowerSum characteristics and exceed the ANSI/TIA-568-C specifications. When combined with Connectix Enhanced Category 5 Patch Panels and UTP Cable, the link will perform well more than the Enhanced Category 5 Specification.





Features & Benefits

- High Density, single gang unit
- Available in a 2 or 4 port version
- Enhanced Category 5 performance
- No protruding leads
- Designed for direct wall mounting
- Custom logo service available

Specifications

Width	87 mm
Depth	27 mm
Height	87 mm
Material	ABS thermoplastic resin, with grade UL94 VO at 1.5 mm flame retardancy
Finish	High gloss
IDC Colour	Code IDC colour code to T568B
IDC Blocks	Industry standard IDC blocks
PCB	1.6 mm double sided PTH boards
Conforms	to ANSI/TIA-568-C Enhanced Category 5 Specification

The Connectix 4000 Series offers Enhanced Category 5 performance in a High-Density package.

The Connectix 4000 Series is extremely quick and easy to install; just attach the base plate, snap in the PCB, punch down the cables and install the cover. Gone are the problems of installing modules into a faceplate and pushing excess wires into a back box.

The 4000 Series Outlets have been designed for direct wall mounting with top entry mini trunking. In addition, they fit on a standard back box to provide maximum mounting flexibility. The position of the sockets on the Vertical Outlet allow for a compact installation without protruding leads.

Ordering Information

Product Description	Part Number
CCS Cat 5e 4 Way Vertical Wall Outlet	008-001-011-01
CCS Cat 5e 2 Way Vertical Wall Outlet	008-001-011-03





Features & Benefits

- Tamper proof design
- High density, single gang unit
- Available in a 2 or 4 port version
- Enhanced Category 5 performance
- Designed for direct wall mounting
- Custom logo service available

Specifications

Width	87 mm
Depth	27 mm
Height	87 mm
Height (including tamper proof cover)	120 mm
Spacer Plate Depth	8 mm
Material	ABS thermoplastic resin, with grade UL94 VO at 1.5 mm flame retardancy
Finish	High gloss
IDC Blocks	4-way industry standard IDC blocks
IDC Colour	Code IDC colour code to T568B
PCB	1.6 mm double sided PTH boards
Conforms	to ANSI/TIA-568-C Enhanced Category 5 Specification

Ordering Information

Product Description	Part Number
CCS Cat 5e 4 Way Tamper proof Wall Outlet	008-001-012-01
CCS Cat 5e 2 Way Tamper proof Wall Outlet	008-001-012-03

The Connectix 4000 Series offers Enhanced Category 5 performance in a High-Density package.

The Tamper proof outlet restricts the user's access to patch leads, eliminating unauthorised or accidental patch lead disconnection which is one of the most common causes of network problems.

The 4000 Series is extremely quick and easy to install; just attach the base plate, snap in the PCB, punch down the cables and install the cover. But the Tamper proof version has the added benefit that leads cannot be unplugged without first removing the cover, and the position of the sockets allow for a compact installation without protruding leads.

The 4000 Series outlets have been designed for direct wall mounting with top entry mini trunking. In addition, they fit on a standard back box to provide maximum mounting flexibility.





Features & Benefits

- Suitable for Gigabit Ethernet applications
- Individual colour coded saddles allow quick and accurate terminations
- Top quality sockets
- Fully QA tested
- Optional cable management tray

Specifications

Width	483 mm (19")
Depth	30 mm
Height	1u (44 mm)
Fixing Centres	467 mm
Material	Mild steel sheet CR4 to BSEN 10130-1999 DC01 Plastic inserts ABS thermoplastic resin with grade UL94 V0 at 1.5 mm flame retardancy
Finish	Black powder coated to BS6496
Socket Labels	9 mm numbered card to BS6496
IDC Labels	Individual colour coded labels to T568B
Cable Guide	Individual cabling saddles with cable tie positioned for left or right entry
IDC Blocks	4-way industry standard IDC blocks
PCB	Groups of 4 identical circuits on 1.6 mm double sided PTH boards
Conforms to	ANSI/TIA-568-C Enhanced Category 5 Specification

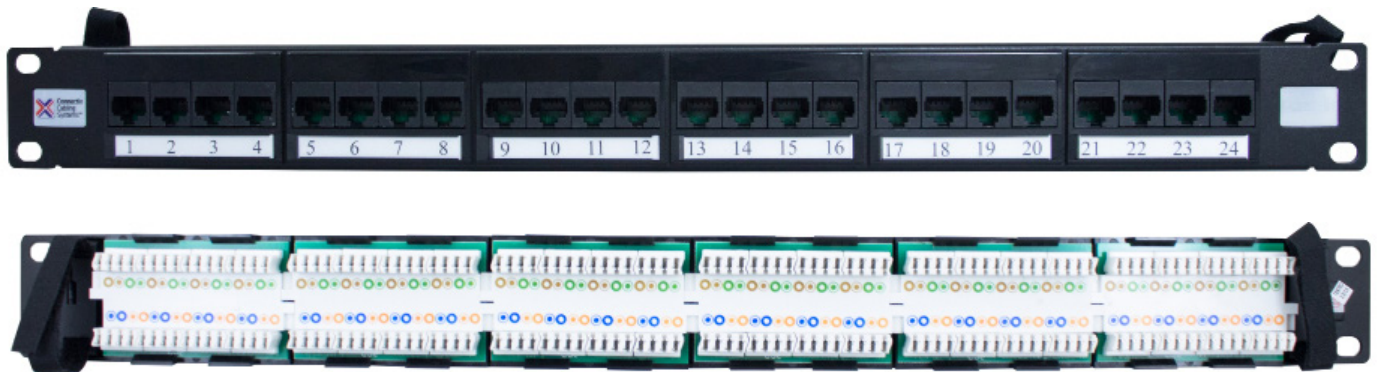
Connectix Enhanced Category 5 High Density Elite Patch Panels provide exceptional performance for high speed LANs including Gigabit Ethernet applications. The High-Density format is ideal where cabinet space is at a premium.

The panels achieve optimum transmission performances by incorporating the highest quality components and innovative on-board compensation techniques. The front of the panel features easy to use slide in labels and the rear utilises colour coded cable saddles and hook and loop cable retainers.

All Connectix Enhanced Category 5 Panels offer extended PowerSum characteristics and exceed the ANSI/TIA-568-C specifications, and when combined with Connectix Enhanced Category 5 Modules and UTP Cable, the link will perform well in excess of the Enhanced Category 5 Specification.

Ordering Information

Product Description	Part Number
CCS Elite Cat 5e 24 Way UTP Panel	009-001-009-09
CCS Elite Cat 5e 48 Way UTP Panel	009-001-009-20
CCS Elite Cable Management Tray	009-001-008-30





Features & Benefits

- Easy to install
- Simple cable management
- Suitable for Gigabit Ethernet applications
- Can be configured with copper and fibre to suit individual requirements
- Mix and match copper and fibre in one panel

Specifications

Width	483 mm (19")
Depth	95 mm
Height	1u (44 mm)
Fixing Centres	467 mm
Material	Mild steel sheet CR4 to BSEN 10130-1999 DC01
Finish	Matt black polyester paint
Socket Labels	Write-on silk screen on panel front
Cable Management	Improved cabling facility with easy to use cable tie positions for left and right cable entry
IDC Labelling	Colour coded to T568B
IDC Blocks	Industry standard 4 way IDC's
Conforms to	ANSI/TIA-568-C Enhanced Category 5 Specification

Ordering Information

Product Description	Part Number
Cat 5e 24 Way HD 2020 Panel	009-001-001-01
Cat 5e 24 Way HD 2020 Panel (Adjustable)	009-001-001-02
4 Port ST Fibre Module	009-001-040-65
2 Port SC Fibre Module	009-001-040-70
2 Port LC Fibre Module	009-001-040-80
2 Port FC Fibre Module	009-001-040-85

The Connectix 2020 Series Patch Panel is an alternative to The Enhanced Category 5 High Density Panel. It offers the same Enhanced Category 5 performance as the standard panel but has been designed to present the cable termination IDCs horizontally on a tray at the rear of the panel, making termination and cable management easier.

Connectix Enhanced Category 5 24 Way Panels achieve optimum transmission performance by incorporating the highest quality components and innovative on-board compensation techniques. The front of the panel features write on designation labels, which also provide an ideal surface for application of custom printed labels.

This panel offers extended PowerSum characteristics and exceeds the ANSI/TIA-568-C specifications. When combined with Connectix Enhanced Category 5 Modules and UTP Cable the link will perform well in excess of the Enhanced Category 5 Specification.

LC, SC, ST and FC fibre modules are also available, complete with a Starlight compatible gland hole and integrated management tray. Blank modules can be included for future expansion.





Features & Benefits

- High density, 24 ports in 1u
- Enhanced Category 5 system performance
- Custom logo service available
- 2020 series version also available
- RJ45 to RJ45 connection

Specifications

Width	483 mm (19")
Depth	35 mm
Height 24 way	1u (44 mm)
Fixing Centres	467 mm
Material	Mild steel sheet CR4
Finish	Black powder coat BS6496
Socket Labels	9 mm numbered card with acetate cover
RJ45 Sockets	Unshielded vertical jacks
PCB	Groups of 4 identical circuits on 1.6 mm double sided PTH boards
Conforms to	ANSI/TIA-568-C Enhanced Category 5 Specification

Connectix Through Coupler Panels offer Enhanced Category 5 system performance, and feature 24 ports in 1u. They offer the perfect solution when a panel mounted high performance, high density plug-to-plug connection is required. Designed to match the other panels in the Connectix range the Coupler Panels have RJ45 sockets front and rear to facilitate through coupling.

Ordering Information

Product Description	Part Number
Cat 5e 24 Way Through Coupler	009-001-019-02





Features & Benefits

- Suitable for Gigabit Ethernet applications
- PVC, LSZH or PE outer sheaths
- Supplied metre marked in Reelex boxes for easy installation
- Pure copper cores
- Excellent performance exceeding ANSI/TIA Enhanced Category 5 specifications

Specifications

Inner Conductor	24 AWG plain copper
Insulation	High density polyethylene
Construction	4 twisted pairs cabled together
Colour Code	Pair 1: White/Blue-Blue/White Pair 2: White/Orange-Orange/White Pair 3: White/Green-Green/White Pair 4: White/Brown-Brown/White
Jacket	PVC, PE (external) or Low Smoke Zero Halogen
Overall Diameter	5.0 +/- 0.2 mm
Weight (Kg/Km)	31
Min Bending Radius	20 mm
Impedance	100 MHz +/- 15 Ω
Capacitance	< 5.6nF/100 m
DC Resistance	< 9 Ω/100 m
Velocity Ratio	69%
Operating Temperature Range	-20°C to +70°C
Installation Temperature Range	0°C to +50°C
Conforms to	ANSI/TIA-568-C Enhanced Category 5 Specification

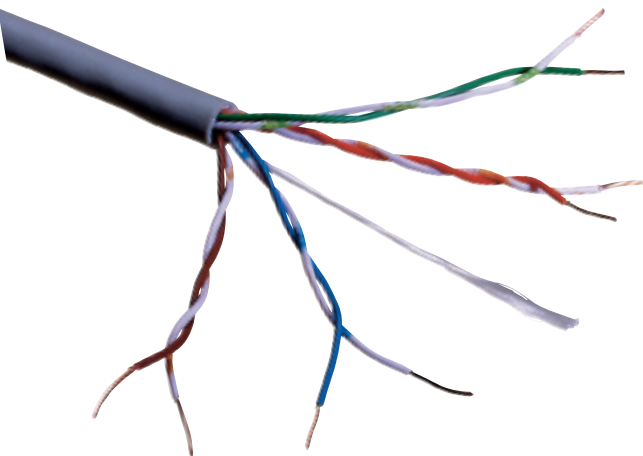
Connectix Enhanced Category 5 UTP Cable is designed for high speed LANs including Gigabit Ethernet applications.

When used with Connectix Enhanced Category 5 panels and modules it gives the exceptional performance required for transmission over all four pairs.

The cable is supplied in easy to use Reelex boxes and is available with standard grey PVC, purple LSZH or black PE outer sheaths.

Ordering Information

Product Description	Part Number
Cat 5e UTP PVC Solid Cable (Grey)	001-003-003-62
Cat 5e UTP LSZH Solid Cable (Violet)	001-003-003-63
Cat 5e UTP Solid External Cable (Black)	001-003-004-30





Features & Benefits

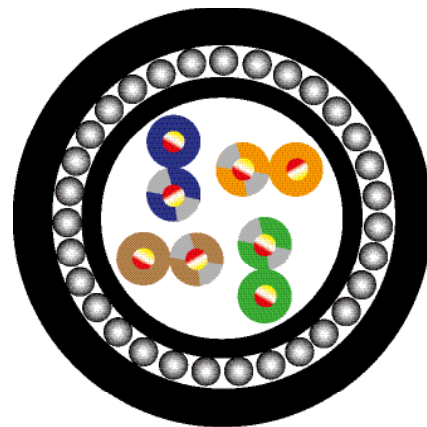
- Rodent proof and waterproof
- Suitable for direct burial
- Suitable for Gigabit Ethernet
- Performance exceeding Category 5e specifications

Specifications

Conductor	Solid bare copper wire (24AWG) - 0.510 mm
Insulation	Polyethylene - 0.90 mm
No. Of Pairs	4
Armour	Data Guard Steel Wire Armour
Conductor Resistance	≤ 190 Ω/km
Resistance Unbalance	≤ 2%
Dielectric Strength	1kV during 1 min = no breakdown
Insulation Resistance (500V)	≥ 5000 MΩ/km
Capacitance Unbalance Real-ground	≤ 1600 pF/km
Characteristic Impedance at 100 MHz	100 ± 5Ω
Nominal Velocity	66%
Bending Radius - Installation	≥ 40 mm
Bending Radius - Installed	≥ 20 mm
Temperature Range - In Service	-20°C to +60°C
Temperature Range - At Installation	-0°C to +50°C
Temperature Range - Transport & Storage	-0°C to +50°C
Max Pulling Tension	80 N
Weight	29 kg/km

Connectix Enhanced Category 5 cable is designed for use in next generation data communications networks, and will comfortably support all present applications including Gigabit Ethernet.

Connectix Category 5e UTP Solid Cable offers the performance characteristics required by the ever-present Category 5e Standard. When used in conjunction with Connectix Category 5e Modules and Patch Panels the user will get a link performance exceeding Category 5e requirements.



Ordering Information

Product Description	Part Number
Cat 5e UTP PE Solid SWA Cable (Black)	001-003-001-20

Performance

Frequency (MHz) (dB/100m)	Max. Att (dB)	Min. NEXT (dB)	Min. ACR (dB)	PS Next (dB/100m)	ELFEXT (dB/100m)	PSELFEXT (dB)	Return Loss
4	3.8	63	59.2	60	63	60	25
10	6	57	51	54	55	52	25
20	8.5	52	43.5	49	48	45	25
62.5	15.2	45	29.8	42	39	36	23.8
100	19.5	42	22.5	39	35	32	23
155	25	39	14	36	31	28	22
200	28	37	9	34	29	26	21



Features & Benefits

- Category 5E performance
- UL tested
- Performance exceeding Category 5E specifications

Specifications

Rated Temperature (°C)	75
Application	Telephone and other communication circuits such as voice, data, and audio for on premise customer systems.
Reference Standard	UL 444
Construction	Stranded Bare Copper
4 Twisted Pair	8C
AWG	24
Construction (mm)	7/0.20
Stranded Dia. (mm)	0.61
Insulation	PE
Nom. Thickness (mm)	0.19
Insulation Dia. (±0.05 mm)	1.0
Cabling	
Construction	4P
Jacket	FR-PVC
Nom. Thickness mm)	0.58
Outer Dia. (±0.10 mm)	5.5

Performance

Electrical Characteristics (20 °C)	
Max. Conductor DC Resistance (Ω /km)	84
Max. Insulation Resistance (Ω /km)	100 M
Dielectric Strength	AC-500V/1 Min
Mechanical Characteristics	
Test Object	Jacket
Test Material	PVC
Before Tensile Strength (kg/mm ²)	≥1.05
Aging Elongation (%)	≥100
Aging Condition	100±2°C × 240 hours
After Tensile Strength	≥70% of original
Aging Elongation	≥65% of original

Connectix Enhanced Category 5 Unshielded Twisted Pair Cable is designed for use in next generation data communications networks, and will comfortably support all present applications including Gigabit Ethernet.

Connectix Category 5E UTP Patch Cable offers the performance characteristics required by the Category 5E Standard. When used in conjunction with Connectix Category 5E RJ45 Jacks and a Category 5E network the user will get a link performance exceeding Category 5E requirements.

Ordering Information

Product Description	Part Number
Cat 6 UTP Patch 305 m (Purple)	001-003-002-08
Cat 6 UTP Patch 305 m (Grey)	001-003-002-01
Cat 6 UTP Patch 305 m (White)	001-003-002-02
Cat 6 UTP Patch 305 m (Blue)	001-003-002-03
Cat 6 UTP Patch 305 m (Green)	001-003-002-04
Cat 6 UTP Patch 305 m (Red)	001-003-002-05
Cat 6 UTP Patch 305 m (Yellow)	001-003-002-06
Cat 6 UTP Patch 305 m (Orange)	001-003-002-07
Cat 6 UTP Patch 305 m (Black)	001-003-002-19





Features & Benefits

- Fully conforms to ANSI/TIA-568-C
- Available from stock in lengths from 0.5 to 5 metres
- Available in nine colours
- Each lead is individually QA tested
- Plugs conform to ISO8877

Specifications

Plug	High performance modular plug
Cable	Enhanced Category 5 stranded cable
Conforms to	ANSI/TIA-568-C

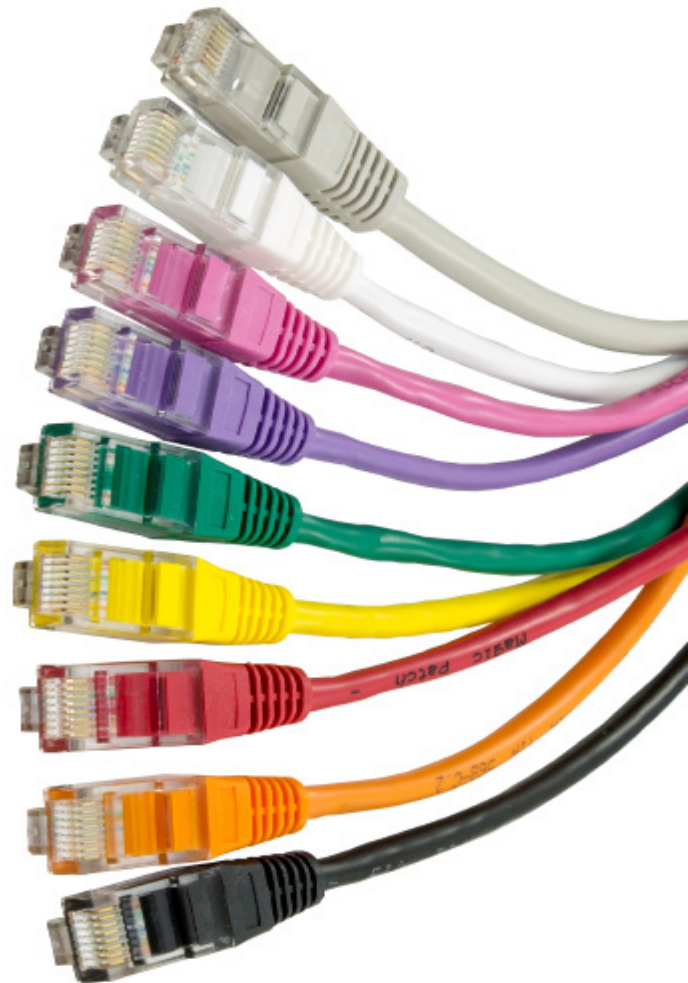
Ordering Information

Colour	Length	Product Number	Length	Product Number
Grey	0.5 m	003-3NB4-005-01C	1 m	003-3NB4-010-01C
White	0.5 m	003-3NB4-005-02C	1 m	003-3NB4-010-02C
Blue	0.5 m	003-3NB4-005-03C	1 m	003-3NB4-010-03C
Green	0.5 m	003-3NB4-005-04C	1 m	003-3NB4-010-04C
Red	0.5 m	003-3NB4-005-05C	1 m	003-3NB4-010-05C
Yellow	0.5 m	003-3NB4-005-06C	1 m	003-3NB4-010-06C
Orange	0.5 m	003-3NB4-005-07C	1 m	003-3NB4-010-07C
Purple	0.5 m	003-3NB4-005-08C	1 m	003-3NB4-010-08C
Black	0.5 m	003-3NB4-005-09C	1 m	003-3NB4-010-09C
Grey	2 m	003-3NB4-020-01C	3 m	003-3NB4-030-01C
White	2 m	003-3NB4-020-02C	3 m	003-3NB4-030-02C
Blue	2 m	003-3NB4-020-03C	3 m	003-3NB4-030-03C
Green	2 m	003-3NB4-020-04C	3 m	003-3NB4-030-04C
Red	2 m	003-3NB4-020-05C	3 m	003-3NB4-030-05C
Yellow	2 m	003-3NB4-020-06C	3 m	003-3NB4-030-06C
Orange	2 m	003-3NB4-020-07C	3 m	003-3NB4-030-07C
Purple	2 m	003-3NB4-020-08C	3 m	003-3NB4-030-08C
Black	2 m	003-3NB4-020-09C	3 m	003-3NB4-030-09C
Grey	4 m	003-3NB4-040-01C	5 m	003-3NB4-050-01C
White	4 m	003-3NB4-040-02C	5 m	003-3NB4-050-02C
Blue	4 m	003-3NB4-040-03C	5 m	003-3NB4-050-03C
Green	4 m	003-3NB4-040-04C	5 m	003-3NB4-050-04C
Red	4 m	003-3NB4-040-05C	5 m	003-3NB4-050-05C
Yellow	4 m	003-3NB4-040-06C	5 m	003-3NB4-050-06C
Orange	4 m	003-3NB4-040-07C	5 m	003-3NB4-050-07C
Purple	4 m	003-3NB4-040-08C	5 m	003-3NB4-050-08C
Black	4 m	003-3NB4-040-09C	5 m	003-3NB4-050-09C

Connectix Magic Patch Brand Enhanced Category 5 UTP Patch Leads are designed to exceed the performance requirements of the Enhanced Category 5 specification.

Magic Patch leads are made from Enhanced Category 5 stranded cable and are terminated using high performance modular plugs. Each lead is individually factory tested to the standard to ensure true standard compatibility.

We stock a variety of booted and unbooted leads in lengths from 0.5 to 5 metres, available in several different colours.





Features & Benefits

- Individually performance tested
- Enhanced Category 5 performance
- Available from stock in lengths from 0.5 to 5 metres
- Available with blue, red, yellow or green latches
- Offers enhanced security

Specifications

Plug	High performance 50 um gold plated
Cable	Enhanced Category 5 cable
Conforms	to EIA/TIA-568-C Enhanced Category 5
Boot & Secure Lock	Polycarbonate
Key	Polycarbonate

Ordering Information

Colour	Length	Product Number	Colour	Length	Product Number
Red	0.5 m	003-004-005-05	Blue	0.5 m	003-004-005-03
Red	1 m	003-004-010-05	Blue	1 m	003-004-010-03
Red	2 m	003-004-020-05	Blue	2 m	003-004-020-03
Red	3 m	003-004-030-05	Blue	3 m	003-004-030-03
Red	5 m	005-004-050-05	Blue	5 m	003-004-050-03
Yellow	0.5 m	003-004-005-06	Green	0.5 m	003-004-005-04
Yellow	1 m	003-004-010-06	Green	1 m	003-004-010-04
Yellow	2 m	003-004-020-06	Green	2 m	003-004-020-04
Yellow	3 m	003-004-030-06	Green	3 m	003-004-030-04
Yellow	5 m	003-004-050-06	Green	5 m	003-004-050-04
Boot Removal Key					006-003-007-90

The Patchlock leads from Connectix provide extra security when installed in public areas as they prevent the risk of unauthorised disconnection of critical network connections. A Removal Key must be used to release the secure lock thus allowing the patch lead to be removed.

The Connectix Enhanced Category 5 UTP Patch Leads are designed to exceed the performance requirements of the Enhanced Category 5 Specification.

Connectix Patch Leads are made from Enhanced Category 5 cable and are terminated using high performance modular plugs. Each lead is individually factory tested to the standard to ensure true standard compatibility.

Leads are available in lengths from 0.5 to 5 metres, and in several different colours.



Boot Removal Key

